

# NC-SARA Data Reporting Webinar

Fall 2020 Distance Education  
Enrollment & 2020 Out-of-State  
Learning Placements

March 11, 2021

Countdown to Start:

10:00

mins:  secs:  type:





# Webinar Guidance

Please use the Question and Answer feature for questions.

The Closed Caption option is available.

The webinar will be recorded.

This presentation and any other resources referenced will be available next week to all who registered, and will be posted on the NC-SARA website.

# Welcome from NC-SARA's CEO and President Dr. Lori Williams



# Presenters



**Marianne Boeke, Ph.D.**  
Senior Director for Research  
and State Support



**Rachel Christeson, Ph.D.**  
Assistant Director for Research  
and Data Analysis



**Terri Taylor Straut, MBA**  
CEO & Solution Architect  
Ascension Consulting Group



# Agenda

## NC-SARA Data Update

- Change in Nomenclature used for Reporting Periods
- Website Changes

## 2019 Data Overview

## Data Reporting Resources

- What's Notable for 2020 Reporting

## Distance Education Enrollment Reporting

- Questions on Enrollment Reporting

## OOSLP Reporting

- Questions on Enrollment Reporting

## What's Next?



# NC-SARA Data Update

# Change in Nomenclature Used for Reporting

Beginning with the NC-SARA Data Report published in December 2020, NC-SARA changed the nomenclature used for reporting periods.

The change was made so that the title of the reports and references to dates are reflective of the data.

- *This seemed particularly important in preparation for talking about 2020 data reported in 2021.*





# Website Changes

## Data Overview

[ARCHIVED DATA REPORTS ▶](#)[INSTITUTIONAL DATA REPORTING ▶](#)[DATA FILES ▶](#)[DATA OVERVIEW](#)[ARCHIVED DATA REPORTS](#)[INSTITUTIONAL DATA REPORTING](#)[DATA FILES](#)

## Why is NC-SARA's Data Collection Important?

Collecting, reporting, and analyzing data about the interstate delivery of distance education are important parts of NC-SARA's mission. Data collection and reporting help measure the impact of SARA.

- **Distance Education Enrollments:** Within the distance education enrollment report, the data helps answer the question of which institutions are enrolling distance education students and where those students are located.
- **Out-of-State Learning Placements:** For the out-of-state learning placement report, the data is helping us to understand how many students are participating in out-of-state learning activities covered by SARA and how those activities span various program areas.

The reports that NC-SARA produces yearly on these topics are available for public consumption, as is the raw data.

## NC-SARA Data Report

We are pleased to share the NC-SARA Data Report, which shares distance education enrollment data from SARA participating institutions from fall 2019, and out-of-state learning placements (OOSLP) for the 2019 calendar year.

- Click [here](#) for the Data Report Executive Summary Infographic
- Click [here](#) for the Data Report



# Gratitude for Reporting During Pandemic





## **2019 Data Reporting in 2020**



# DATA REPORT

Fall 2019 Distance Education Enrollment & 2019 Out-of-State Learning Placements

NC-SARA's fifth annual distance education enrollment report and dataset analyzes the last available data on distance education enrollment before the COVID-19 pandemic forced a fundamental shift in the delivery of higher education across America.

## FAST FACTS: ABOUT THE NC-SARA DATA REPORT

**2,088**

Data was collected from 2,088 SARA participating institutions



Distance education enrollment data is from fall 2019

**349,930**

The number of OOSLPs reported for calendar year 2019 increased 45.8% over 2018 (239,955).

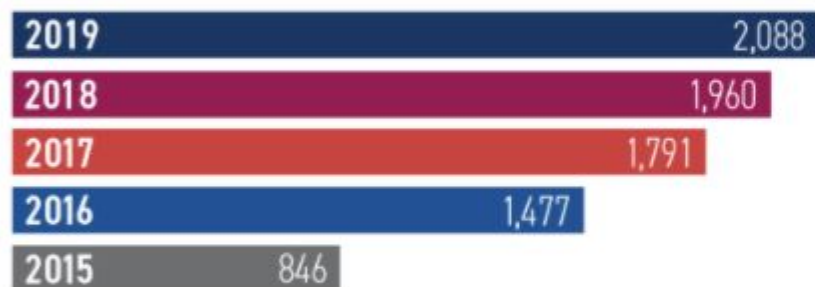


Out-of-State Learning Placement (OOSLP) data is for calendar year 2019

Link to Infographic: <https://nc-sara.org/data-reporting-executive-summary>

Link to Data Report: <https://nc-sara.org/data>

## NUMBER OF SARA PARTICIPATING INSTITUTIONS REPORTING ENROLLMENT DATA



## DISTANCE EDUCATION ENROLLMENT: FALL 2019 VS FALL 2018

**3,016,944**

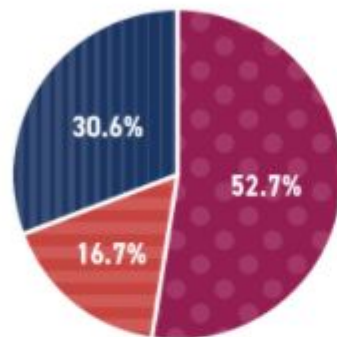
Total distance education enrollment reported in fall 2019 was 3,016,944, up 7.5% from fall 2018 (2,806,382).

## BREAKDOWN OF DISTANCE EDUCATION ENROLLMENT BY SECTOR

**PUBLIC**  
INSTITUTIONS

PRIVATE  
**FOR-PROFIT**  
INSTITUTIONS

PRIVATE  
**NON-PROFIT**  
INSTITUTIONS



Breakdown of Total Distance Education Enrollment by Sector

## OUT-OF-STATE LEARNING PLACEMENTS (OOSLP)

The largest Out-of-State Learning Placements were in health-care-related programs (52.8%), followed by education (10.9%), and business (5.9%). The remaining 30.4% of learning placements were in a variety of fields, such as engineering and social sciences.



**52.8%**

Health Professions



**10.9%**

Education



**5.9%**

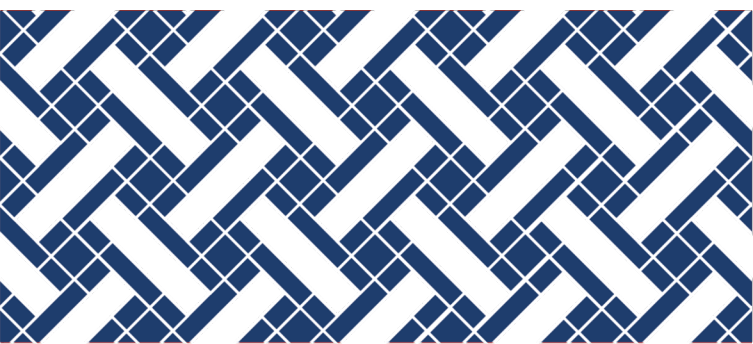
Business



**30.4%**

Variety of Fields

View the full NC-SARA Data Report at [www.nc-sara.org](http://www.nc-sara.org).



# Data Reporting Resources



# Data Reporting Resources



The screenshot shows the NC-SARA website's 'Institutional Data Reporting' page. The header includes the NC-SARA logo and navigation links: Home, The State Authorization Guide, Apply & Renew, Reporting, and Log In. A search bar is located to the right of the navigation links. Below the header, a secondary navigation bar lists: STATES, INSTITUTIONS, STUDENTS, RESOURCES, NEWS & EVENTS, DATA, and ABOUT NC-SARA. The main content area features a large heading 'Institutional Data Reporting' followed by the text 'All the materials institutions need to report for the upcoming year.' Below this, a section titled 'Data Reporting' provides information about the 2021 reporting time frame: 'The 2021 time frame to report fall 2020 distance education enrollments and calendar year 2020 out-of-state learning placements is May 15, 2021 through June 15, 2021.' A 'Resources:' section follows, listing four items: 'NC-SARA Data Reporting Handbook for Institutions', 'Sample Placement Reporting Matrix', '2021 Data Sharing Agreement', and 'Trainings and webinars - March 11, 2021'.

**NC SARA**

Home The State Authorization Guide Apply & Renew Reporting Log In

STATES INSTITUTIONS STUDENTS RESOURCES NEWS & EVENTS DATA ABOUT NC-SARA

## Institutional Data Reporting

All the materials institutions need to report for the upcoming year.

### Data Reporting

The 2021 time frame to report fall 2020 distance education enrollments and calendar year 2020 out-of-state learning placements is May 15, 2021 through June 15, 2021.

**Resources:**

- [NC-SARA Data Reporting Handbook for Institutions](#)
- [Sample Placement Reporting Matrix](#)
- [2021 Data Sharing Agreement](#)
- [Trainings and webinars](#) - March 11, 2021

**NC-SARA Data  
Reporting Webpage**

<https://nc-sara.org/institutional-data-reporting>



# What's New and Notable for 2020 Reporting?

Follow IPEDS Guidance on reporting **Remote Learning**.

- Report to NC-SARA as you do for IPEDS.
- <https://nces.ed.gov/ipeds/use-the-data/distance-education-in-ipeds>

Report All OOSLP Activities.

- If the learning placements were started, but not completed, please report them.
- Do not report virtual learning placements, as has been the case.

**Coming in 2022:**  
**Branch campus reporting will be mandatory.**

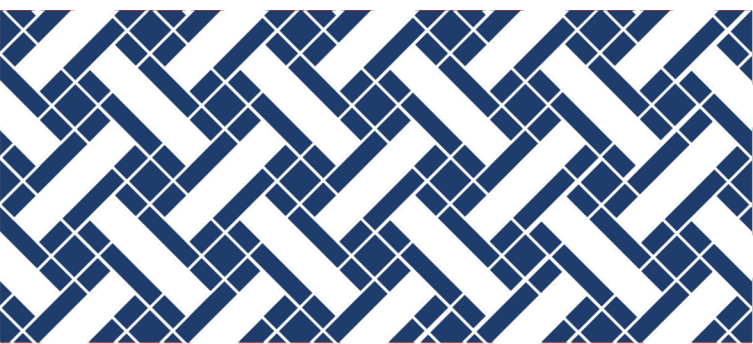


# Communication About Data Reporting

Determine **Who** will coordinate reporting internally.

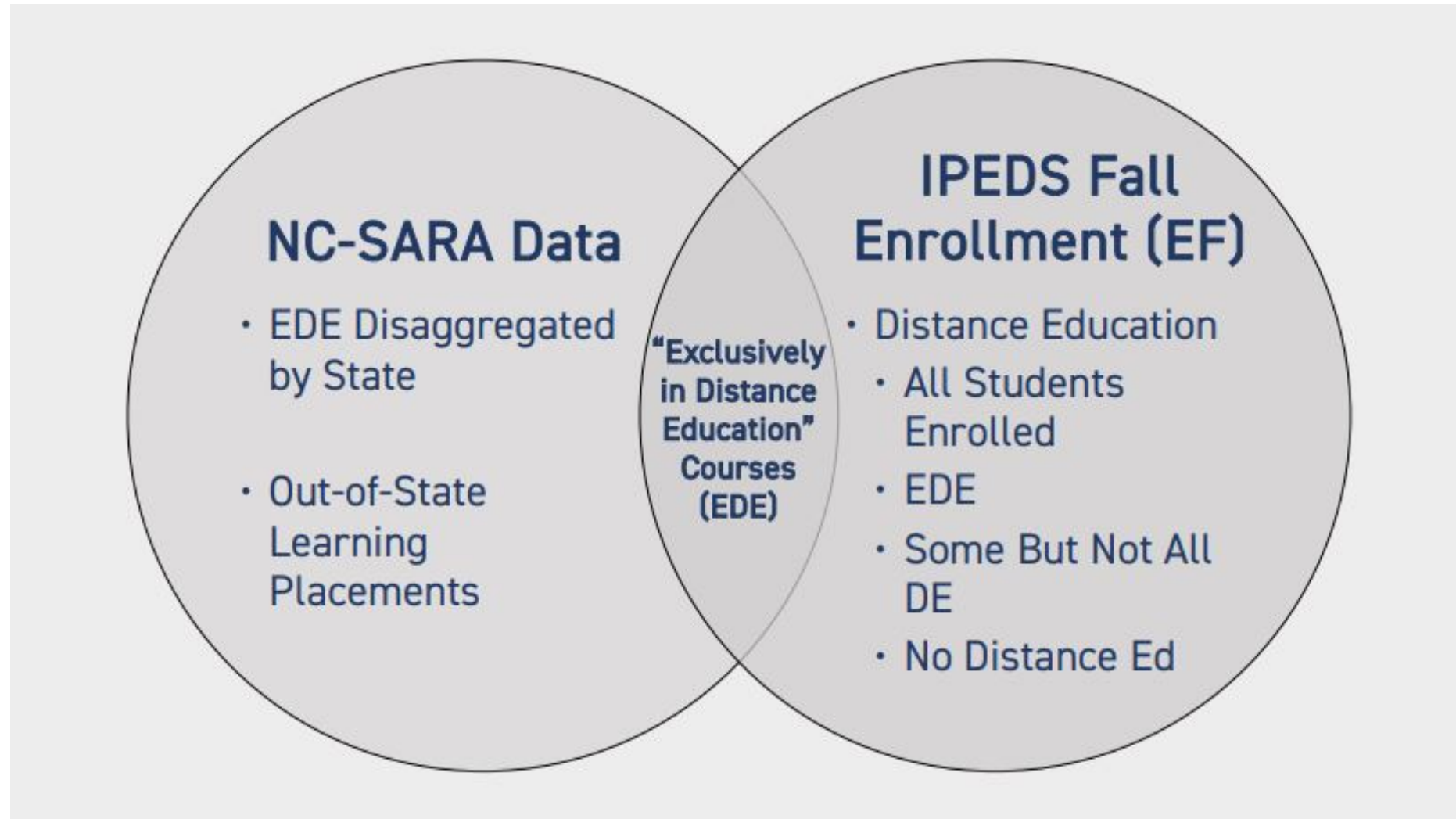
All active SARA contacts will receive emails:

- ✓ Notification on May 15 that the survey is open.
- ✓ Reminders during the reporting window.
- ✓ Confirmations when the surveys are submitted.



# **Distance Education Enrollment Data Reporting**

# Reporting Requirements of NC-SARA & IPEDS EF





# Distance Education Enrollment Reporting

## Four general points of guidance:

1. Report distance education enrollments as you do to IPEDS in the EF report;
2. Enlist the help of the person who does your institution's reporting to IPEDS (because they are intimately familiar with the world according to IPEDS);
3. If in doubt, use your best professional judgment, exercised within the spirit and intent of SARA; and
4. Read the NC-SARA Data Sharing Agreement. The person who submits the data needs to agree to the terms.

# Distance Education Enrollment Reporting

## Two Online Survey Tabs

Distance Education Enrollment	Out-of-State Learning Placements (OOSLP)
<p>Reporting Period </p> <p>2020 </p>	 <p>NC SARA National Council for State Authorization Reciprocity Agreements</p>

NC-SARA 2020-2021 Annual Distance Education Enrollment Reporting



There are 2 Options to Save the Data

- ✓ Save and Return
- ✓ Save and Submit



# Distance Education Enrollment Reporting

## SARA State Enrollment Reporting

☐ This institution has zero Distance Education Enrollments to report

SARA States Total Enrollments - 0

Alabama (AL) <input type="text" value="0"/>	Alaska (AK) <input type="text" value="0"/>	Arkansas (AR) <input type="text" value="0"/>
Arizona (AZ) <input type="text" value="0"/>	Colorado (CO) <input type="text" value="0"/>	Connecticut (CT) <input type="text" value="0"/>
District of Columbia (DC) <input type="text" value="0"/>	Delaware (DE) <input type="text" value="0"/>	Florida (FL) <input type="text" value="0"/>
Georgia (GA) <input type="text" value="0"/>	Hawaii (HI) <input type="text" value="0"/>	Iowa (IA) <input type="text" value="0"/>
Idaho (ID) <input type="text" value="0"/>	Illinois (IL) <input type="text" value="0"/>	Indiana (IN) <input type="text" value="0"/>
Kansas (KS) <input type="text" value="0"/>	Kentucky (KY) <input type="text" value="0"/>	Louisiana (LA) <input type="text" value="0"/>

**NOTE:** Starting this year this is an option to quickly report zero Distance Education Enrollments

# Distance Education Enrollment Reporting

## Non-SARA State Enrollment Reporting

Non-SARA States and Territories Total Enrollments - 0

American Samoa (AS)	California (CA)	Guam (GU)
<input type="text" value="0"/>	<input type="text" value="0"/>	<input type="text" value="0"/>
Marshall Islands (MH)	Federated States of Micronesia (FM)	Northern Mariana Islands (CNMI)
<input type="text" value="0"/>	<input type="text" value="0"/>	<input type="text" value="0"/>
Palau (PW)		
<input type="text" value="0"/>		

The survey form automatically tallies your reported enrollment.

# Distance Education Enrollment Reporting

## Comments Field

Comments

### NOTE:

Please do **not** use this field to ask questions or update your institution's contact information.

Instead: Please use this field to explain anomalies in your data or provide context for your reported distance education enrollment data.

# Distance Education Enrollment Reporting

## Confirmation and Authorization

### Confirmation and Authorization

OPEID	00135000
* Name	<input type="text"/>
Title	<input type="text"/>
* Email	<input type="text"/>
IPEDS Institution Number (Unit ID)	<input type="text"/>
Sector	Public ▼
* If this report included branch campus activity select Yes below	
Not applicable, we have no branch campuses ▼	
* I Agree	By checking this box, your institution agrees to 1) the terms noted in the published <a href="#">NC-SARA Data Sharing Agreement</a> , found <a href="#">here</a> and 2) I understand that by leaving a field blank I acknowledge that the value will be read as zero.
<input type="checkbox"/>	

Save and Return

Save and Submit

### NOTE:

If you need to make a change once you've submitted data, email [data@NC-SARA.org](mailto:data@NC-SARA.org)

# Questions Regarding Enrollment Reporting





## **Out-Of-State Learning Placement (OOSLP) Data Reporting**





# 00SLP Reporting

## Learning Placement Examples:

- Clinical Rotations
  - Student Teaching
  - Internships
- 
- Report **on-ground and online** student 00SLP.
  - 00SLP does NOT include in-state placements.



# 00SLP Reporting: About CIP Codes

*Classification of Instructional Programs (CIP) provides a taxonomic scheme that supports the accurate tracking, assessment, and reporting of fields of study and program completion activity.*

- Use the new 2020 CIP Codes for reporting.  
<https://nces.ed.gov/ipeds/cipcode/Default.aspx?y=56>
- NC-SARA uses the 47 two-digit CIP codes that represent program areas.

# 00SLP Reporting: CIP Code Examples

IES NCES

National Center for Education Statistics

MENU

Search

Go

13) EDUCATION.

13.01) Education, General.

[13.0101\) Education, General.](#)

13.02) Bilingual, Multilingual, and Multicultural Education.

[13.0201\) Bilingual and Multilingual Education.](#)  
[13.0202\) Multicultural Education.](#)  
[13.0203\) Indian/Native American Education.](#)  
[13.0299\) Bilingual, Multilingual, and Multicultural Education, Other.](#)

13.03) Curriculum and Instruction.

[13.0301\) Curriculum and Instruction.](#)

13.04) Educational Administration and Supervision.

[13.0401\) Educational Leadership and Administration, General.](#)  
[13.0402\) Administration of Special Education.](#)  
[13.0403\) Adult and Continuing Education Administration.](#)  
[13.0404\) Educational, Instructional, and Curriculum Supervision.](#)  
[13.0406\) Higher Education/Higher Education Administration.](#)  
[13.0407\) Community College Administration.](#)  
[13.0408\) Elementary and Middle School Administration/Principalship.](#)  
[13.0409\) Secondary School Administration/Principalship.](#)  
[13.0410\) Urban Education and Leadership.](#)  
[13.0411\) Superintendency and Educational System Administration.](#)  
[13.0412\) International School Administration/Leadership.](#)

# 00SLP Reporting

Where are these numbers kept on campus?

- In the academic departments that have learning placements.
- Start with Institutional Research.



*Document your approach to  
ensure consistency each year.*



# Criteria for Inclusion in OOSLP Reporting

1. The placement started between January 1, 2020, and December 31, 2020.
2. The placement is outside the home state of the SARA institution.
3. The placement involves the physical presence of the student at the out-of-state location(s).
4. One or more of the following is true:
  - a. The placement is an activity required for degree completion.
  - b. The placement is an activity required for professional licensure.
  - c. The placement is offered for credit.
  - d. The placement is offered for a fee.

Placements that meet the above criteria should be reported as follows:

- Disaggregate by two-digit CIP code;
- Disaggregate by the state in which the placement was made.



# 00SLP Reporting Example #1

Three University of Texas at El Paso (UTEP) nursing students each do a single clinical rotation at each of two hospitals in Las Cruces, New Mexico, and one rotation at a hospital in Phoenix, Arizona.

- UTEP would report **three** placements in New Mexico and **three** placements in Arizona, all under CIP code 51, Health Professions and Related Programs.





# 00SLP Reporting Example #2

A student at University of Colorado at Denver participated in an 00SLP in spring 2020 under CIP code 13 in Arkansas; this same student then participated in another 00SLP in fall 2020 under CIP code 46 in Washington.

- UCD would report **two** placements, one in each state. If both learning placements were in the same state, both placements would be reported, one under each CIP Code.

# 00SLP: Initial Reporting Screen

Distance Education Enrollment   Out-of-State Learning Placements (OOSLP)

Reporting Period 2020

NC SARA  
National Council for State Authorization Reciprocity Agreements

[Previous](#) [Next](#)

☐ This institution has zero out-of-state placements to report

CIP Type	State/District/Territory	OOSLP Count	Remove
Select CIP Type	Select State		X

Total OOSLP Reported 0

[Save](#) [+ Add another CIP/State](#)

[Previous](#) [Next](#)

## NOTE:

If there are no OOSLP to report, use the check box at the top of the form to report zero.

# OOSLP Reporting: OOSLP Data Entry

Previous

Next

☐ This institution has zero out-of-state placements to report

CIP Type	State/District/Territory	OOSLP Count	Remove
01) Agriculture, Agriculture Operation ▾	AK - Alaska ▾	10	X
03) Natural Resources and Conservati ▾	CO - Colorado ▾	12	X

Total OOSLP Enrollments 22

Save

+ Add another CIP/State

Previous

Next

Use 'Add another CIP/State' to expand the online form to enter all OOSLP data.

# 00SLP Reporting

## Comments Field

Comments



**NOTE:**

Please do **not** use this field to ask questions or update your institution's contact information.

Instead: Please use this field to explain anomalies in your data or provide context for your reported distance education enrollment data.

# 00SLP Reporting

## Confirmation and Authorization

### Confirmation and Authorization

OPEID	00135000
* Name	<input type="text"/>
Title	<input type="text"/>
* Email	<input type="text"/>
IPEDS Institution Number (Unit ID)	<input type="text"/>
Sector	<input type="text" value="Public"/>
* If this report included branch campus activity select Yes below	
<input type="text" value="Not applicable, we have no branch campuses"/>	
* I Agree	By checking this box, your institution agrees to 1) the terms noted in the published NC-SARA Data Sharing Agreement, found <a href="#">here</a> and 2) I understand that by leaving a field blank I acknowledge that the value will be read as zero.
<input type="checkbox"/>	

### NOTE:

If you need to make a change once you've submitted data, email [data@NC-SARA.org](mailto:data@NC-SARA.org)



# Frequently Asked Questions

What if my institution doesn't report to IPEDS?

- Report as if you do.

How do we report Military Students?

- Report *where* they are taking the course.

What definition of “distance education” should we use?

- Use IPEDS' definitions.

How do we handle “remote learning” as a result of the COVID-19 pandemic?

- Use the IPEDS guidance and report to NC-SARA as you did in your EF IPEDS reporting.

<https://nces.ed.gov/ipeds/use-the-data/distance-education-in-ipeds>

# Questions Regarding OOSLP Reporting







**What's Next?**

# What's Next?

## 1. Remote Learning Survey is coming

- Email coming in April with more details.
- Survey will be launched at the end of June.

## 2. Validating Data

- Double-check your own data for consistency
- NC-SARA will reach out if data is wildly different from prior years.

**Data reporting window is May 15 – June 15, 2021**



# Thank You!



<https://www.linkedin.com/company/nc-sara>



@NCSARA\_News

## **CONTACT US!**

For questions about data reporting, please email:  
[data@nc-sara.org](mailto:data@nc-sara.org)

NC-SARA Website:  
[www.nc-sara.org](http://www.nc-sara.org)