

NC-SARA's Annual Data Report Release

October 10, 2023



Time until start:



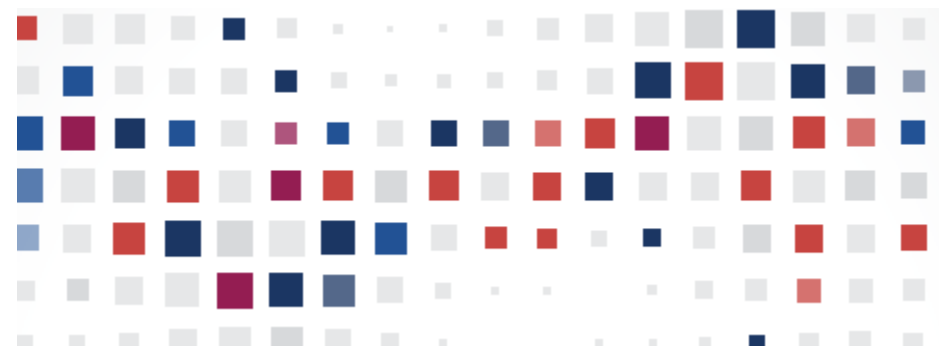
 Breaktime for PowerPoint by Flow Simulation Ltd.

Pin controls when stopped ☒



National Council for
State Authorization
Reciprocity Agreements

MHEC • NEBHE • SREB • WICHE



NC-SARA Webinar Logistics

- ✓ Please use the **Question and Answer** for questions.
- ✓ The **Closed Caption** option is available.
- ✓ The webinar will be recorded.
- ✓ The slides, webinar recording, and any other resources referenced will be available on the NC-SARA website.

NC-SARA Annual Data Report Release



TODAY'S PRESENTERS

Marianne Boeke, PhD

- President, NC-SARA

Rachel Christeson, PhD

- Director for Research and Data Analysis

Terri Taylor Straut, MBA

- Senior Director, Educational Programs

Distance Education by the Numbers

WEBINAR AGENDA

- Welcome & SARA Landscape
- What is the SARA Data?
- 2022 SARA Exclusively Distance Education Enrollment (EDEE) & Out-of-State Learning Placements (OOSLP) Highlights
- NC-SARA's Data Dashboards
- Resources & Important Dates





Welcome & SARA Landscape



What is SARA?

State Authorization Reciprocity Agreements (SARA) is an agreement amongst member states, districts, and territories that establishes comparable national standards and streamlines regulations, fees, and approvals for institutions offering interstate distance education programs. More than 2,400 institutions in 49 member states, the District of Columbia, Puerto Rico, and the U.S. Virgin Islands all voluntarily participate in SARA.

What is NC-SARA?

The National Council for State Authorization Reciprocity Agreements (NC-SARA) is a private nonprofit organization [501(c)(3)] that coordinates the implementation of SARA nationally. In partnership with four regional compacts, NC-SARA helps states, institutions, policymakers, and students understand the purpose and benefits of participating in SARA. The administration of the annual data reporting process is a function of NC-SARA.

Partners, Members, and Participants

Regional Compact Partners

1. MHEC
2. NEBHE
3. SREB
4. WICHE

Regional Steering Committees (RSC)

One RSC for each Regional Compact

State Members

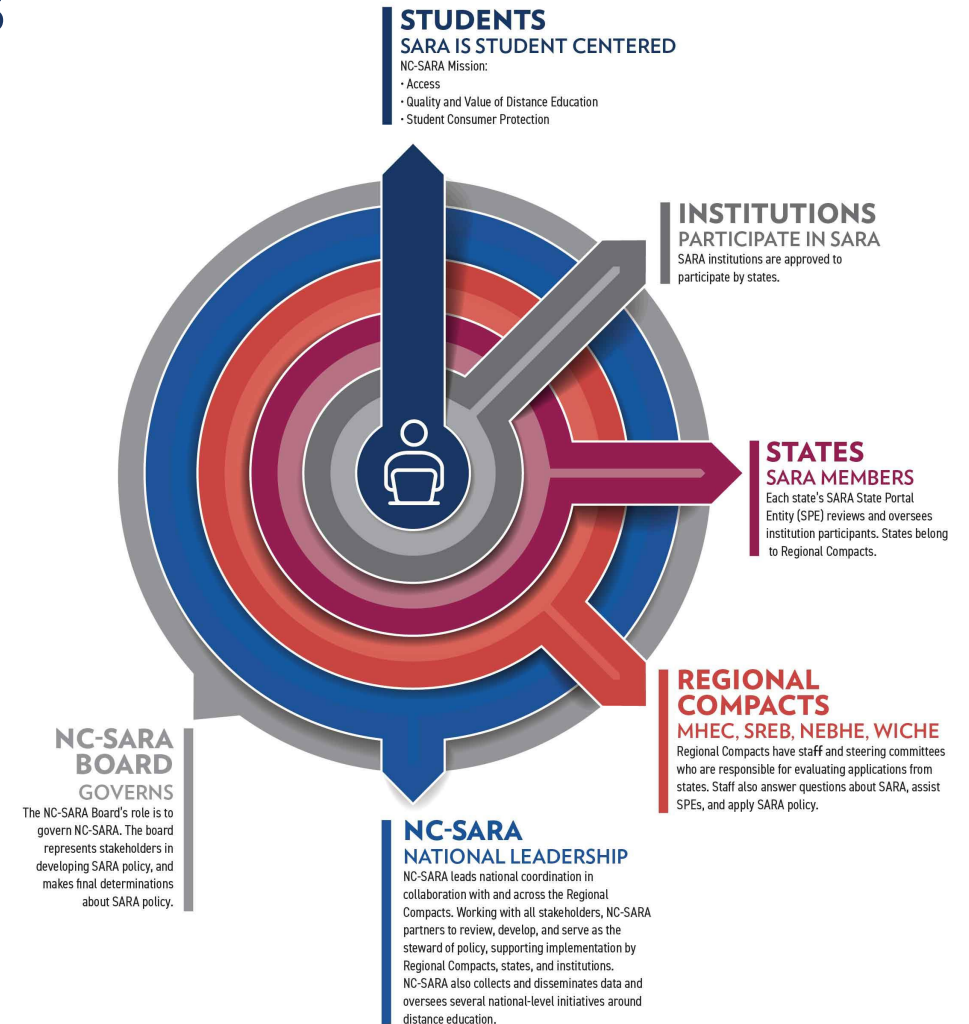
52 States are **members** of SARA

State Portal Entities (SPE)

One SPE for each SARA member state

SARA Participating Institutions

More than 2,400 institutions **participate** in SARA





SARA Member States

LEGEND

MHEC

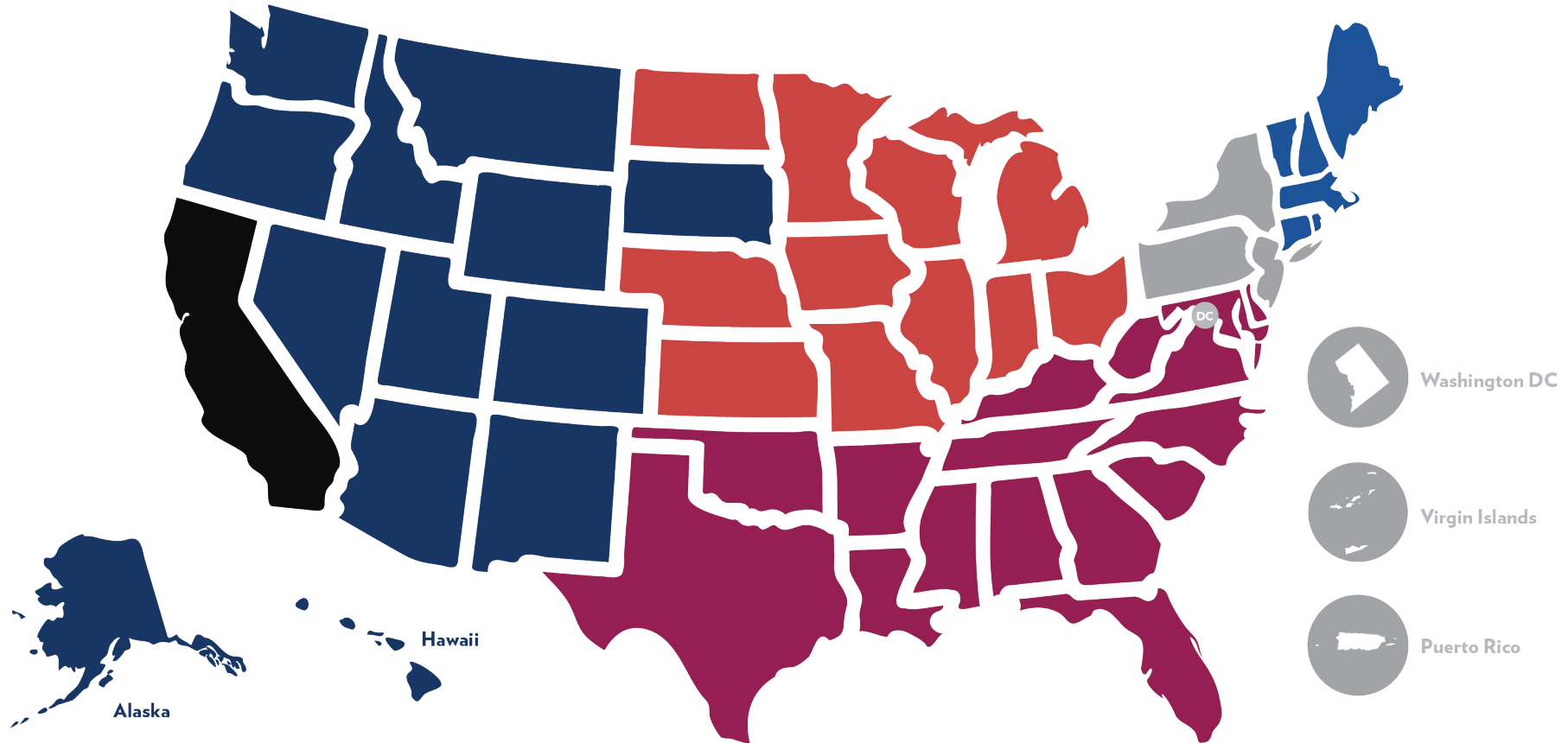
NEBHE

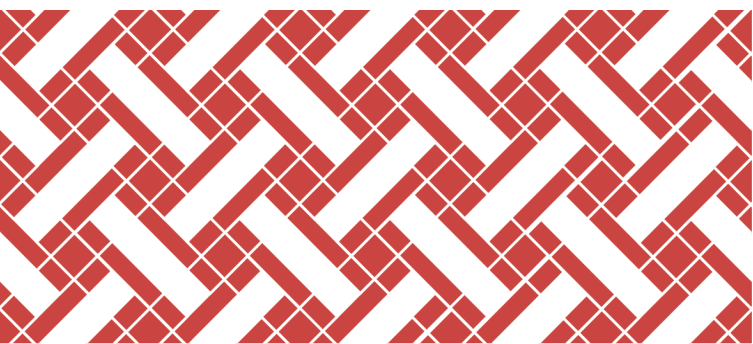
SREB

WICHE

MEMBERS
of SARA; Not in a Compact

NON MEMBER





Poll Question:

1. Who Is Here?

I am joining this webinar from:



What is the SARA Data?

Why Does SARA Collect Data?

Collecting, reporting, and analyzing data about the interstate delivery of distance education are important parts of NC-SARA's mission. Data collection and reporting help measure the impact of SARA.

- **The Promise of Data Collection to States**
 - Standard across country
 - Public and shared
- **History of SARA Data Reports:**
 - 8 years of reporting exclusively distance education enrollments
 - 5 years of reporting out-of-state learning placement data

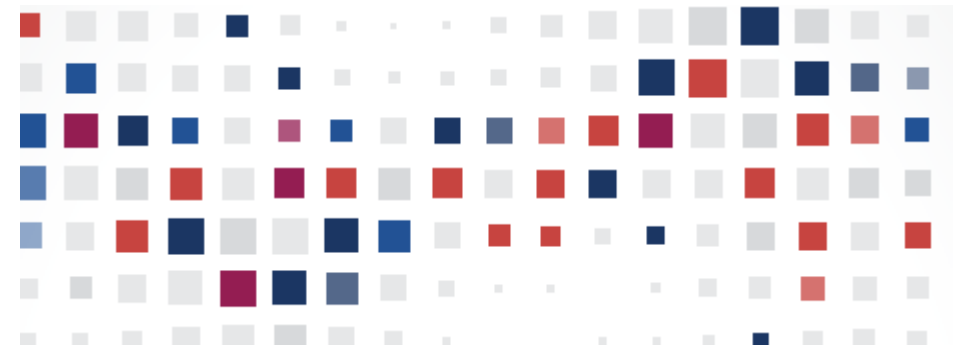
What is the SARA Data?

Exclusively Distance Education Enrollment (EDEE)

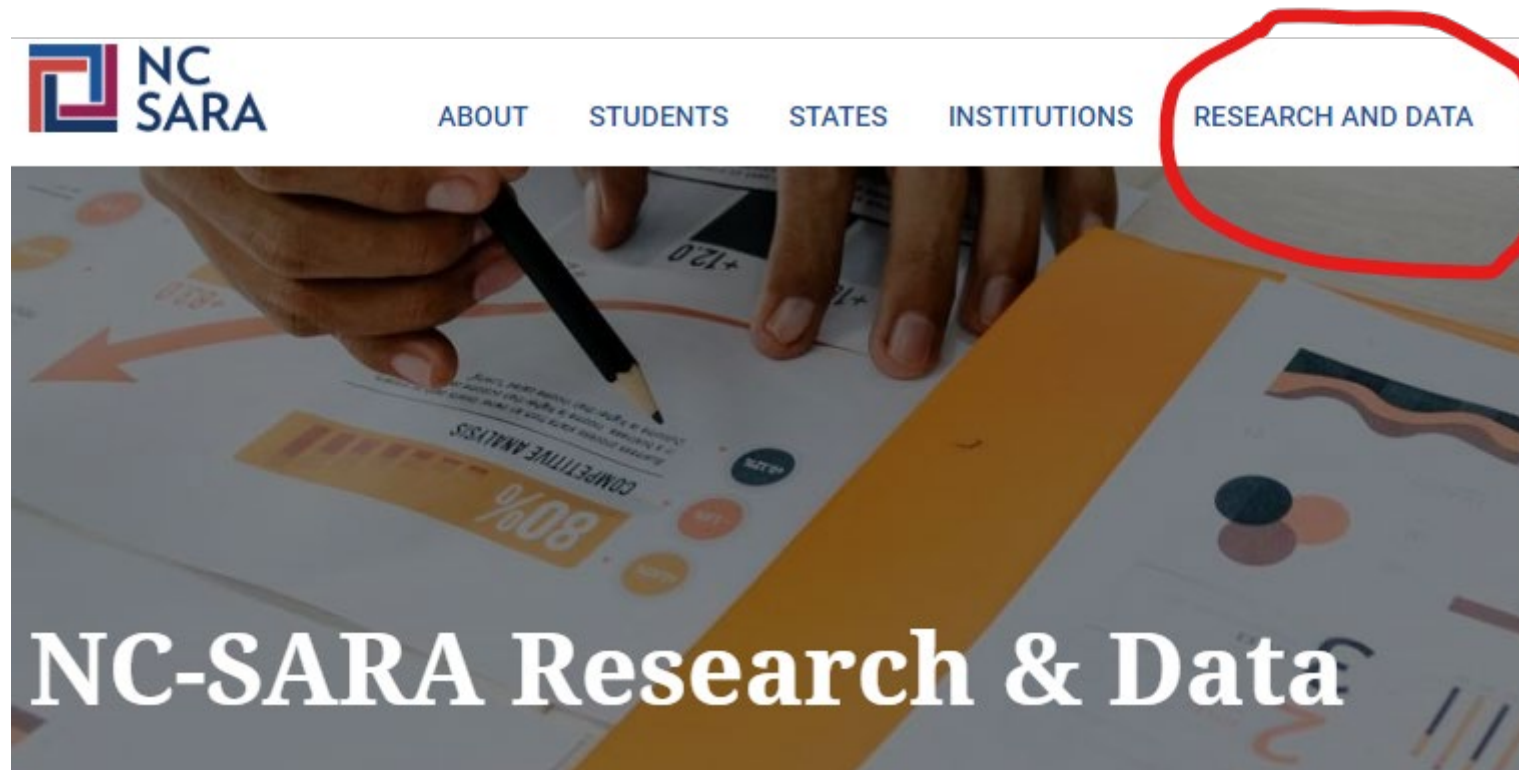
- Institutions report their exclusively distance education enrollments
- Report enrollments as you do to IPEDS (Fall EF report) – but disaggregated by state
- Includes in-state and out-of-state

Out-of-State Learning Placements (OOSLP):

- Report on-ground and online student OOSLP
- OOSLP Does NOT include In-State



Where to Access the SARA Data?



How You Might Use the SARA Data

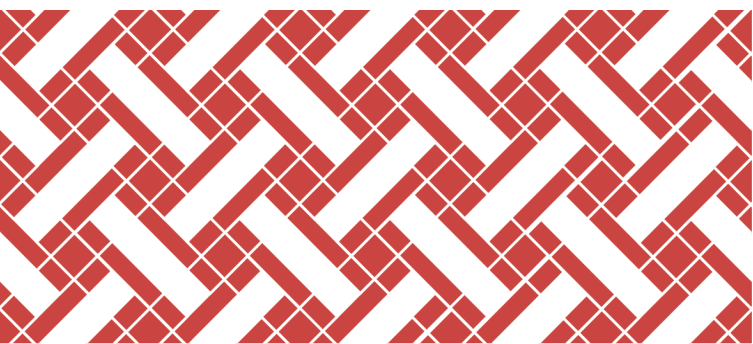


- Eight years of reported EDEE and five years of OOSLP data are available
- The data describe the distance education landscape in your state or region
- They hold historical trends and may provide insights that could inform key decisions about distance education offerings
- Consider how these data may be used as your institution plans for new distance education programs to meet student needs and institutional goals

Data Alone... Are Just Numbers

- Turning data into usable knowledge
- Converting data into information that supports strategic decision-making
- Context matters –
 - qualitative and quantitative





Poll Questions:

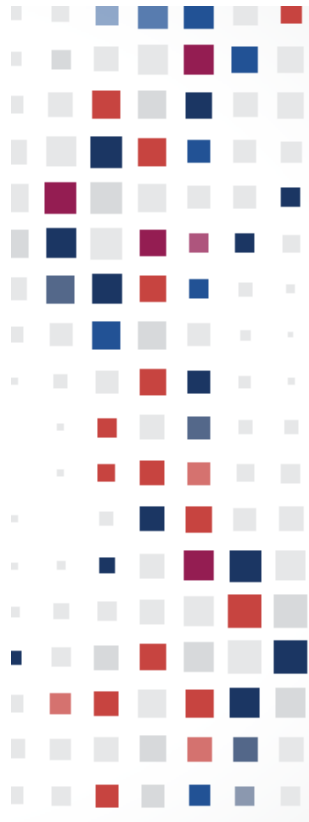
2. Were you the person who completed the data reporting for your institution?

3. How long have you been in your role?



2022 EDEE & OOSLP Data Highlights

Methodology



SARA Data Reporting Window is May 15 – June 15 each year

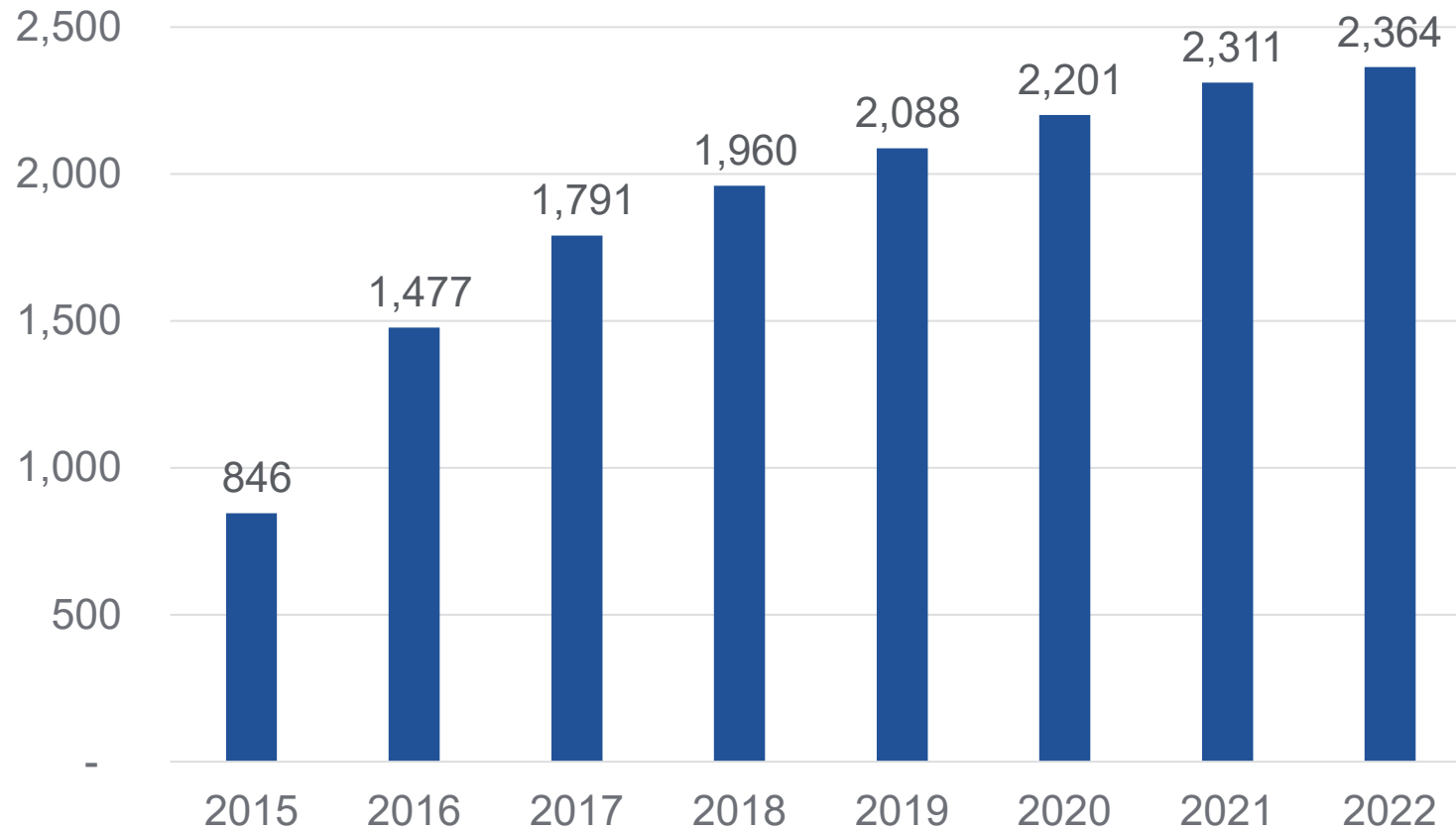
2,274 Institutions were sent an email request to report

- 7 Exemptions were extended (6 non-renewals or institutional closures and 1 institution joined late in 2022)
- 3 Institutions did not report

New process to clarify when new SARA-participating institutions would be required to report was initiated in 2021.

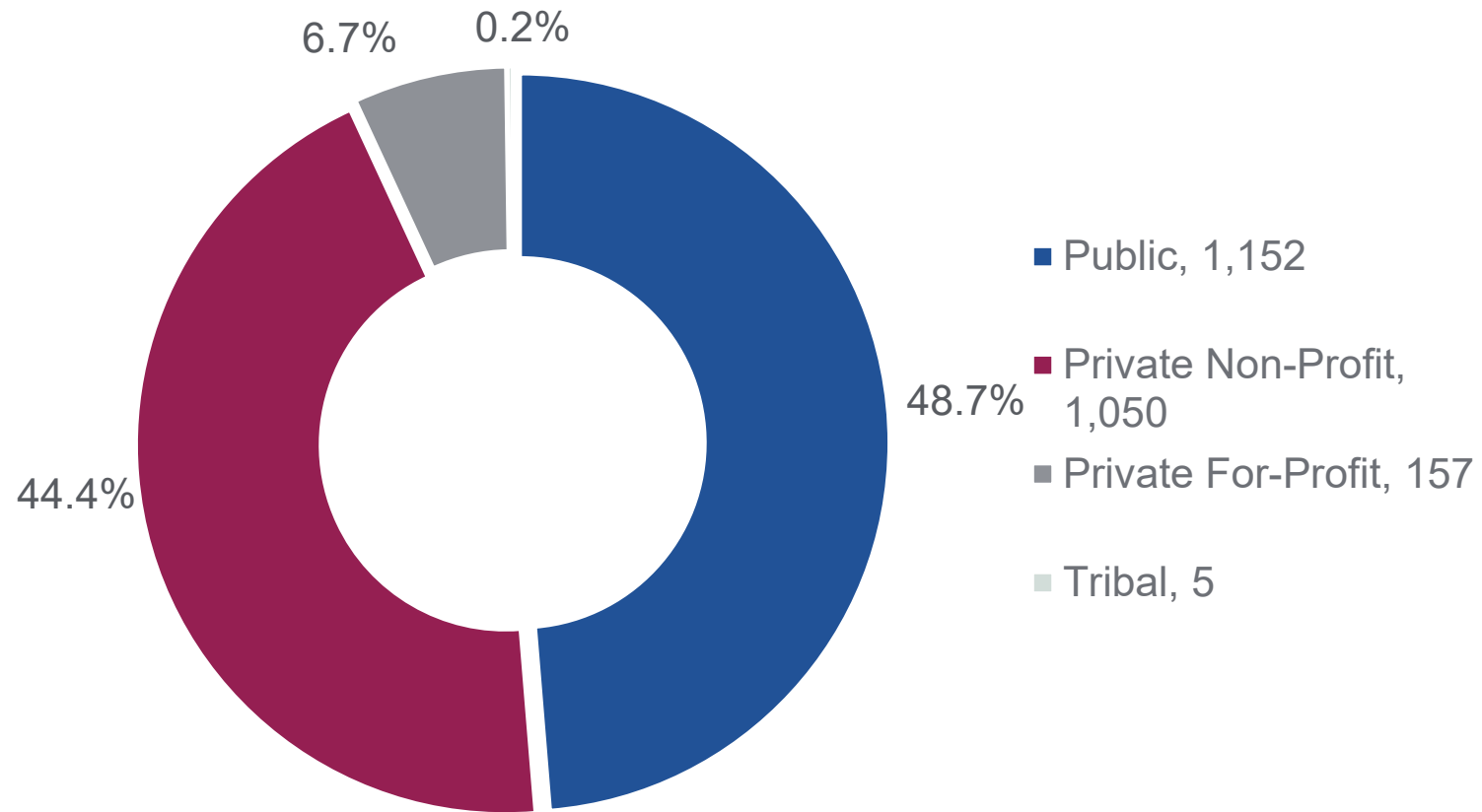
- Institutions must be participating in SARA on or before December 31st of the year prior to the reporting window (May 15 – June 15)
- Institutions approved after that time are expected to report in the following year

Number of Reporting Institutions 2015-2022

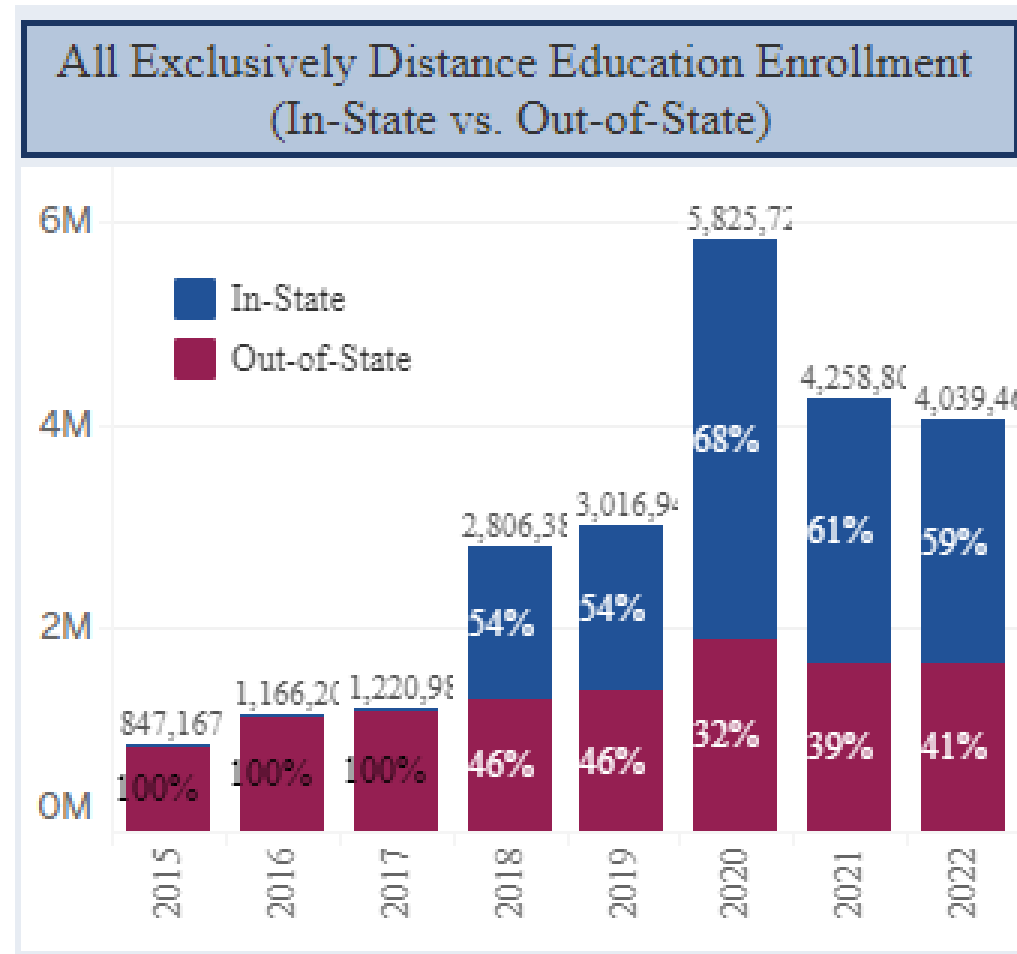


Reporting Institutions by Sector for 2022

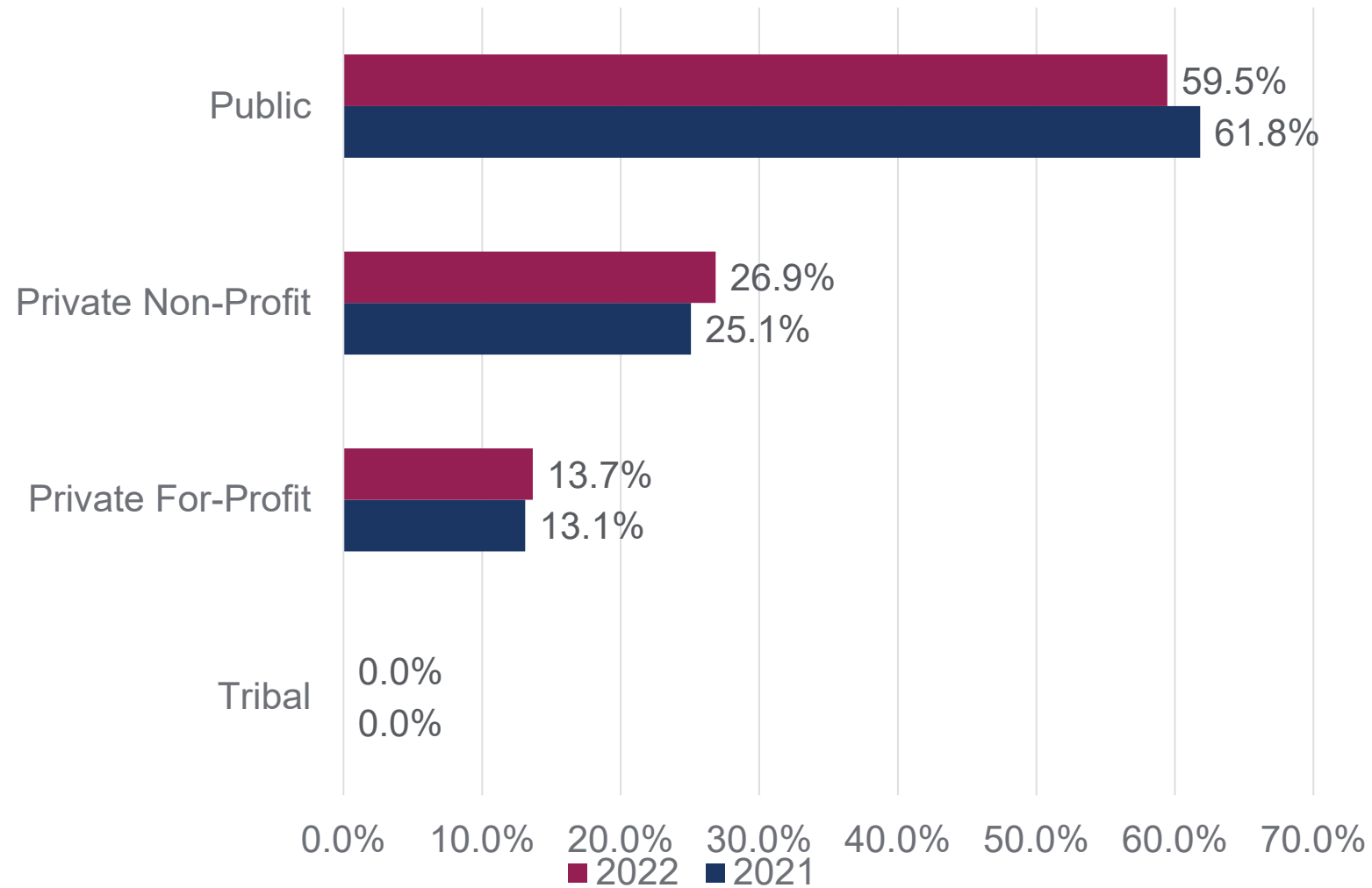
2,364 Reporting Institutions



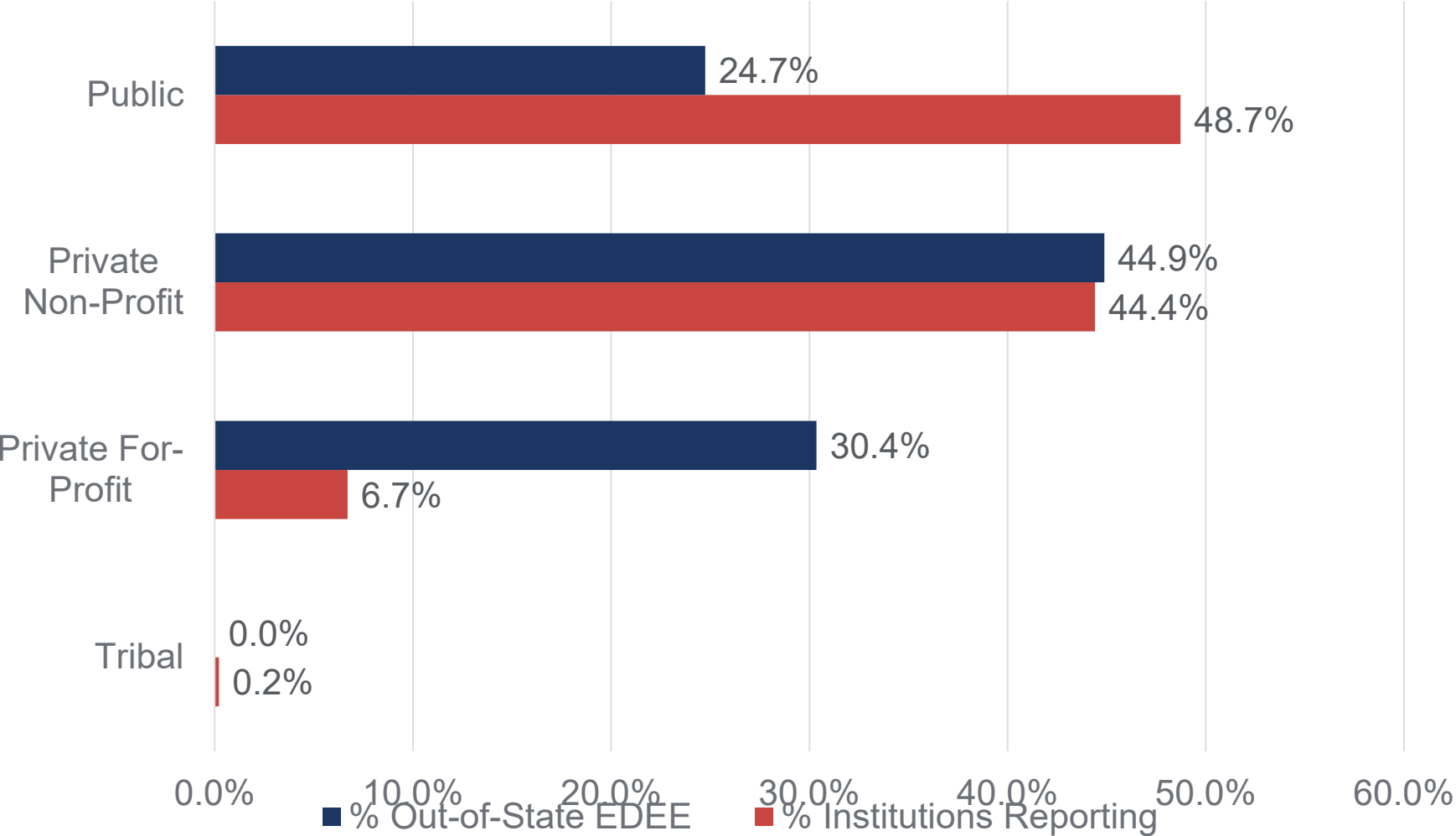
Reported In-State and Out-of-State EDEE 2015-2022



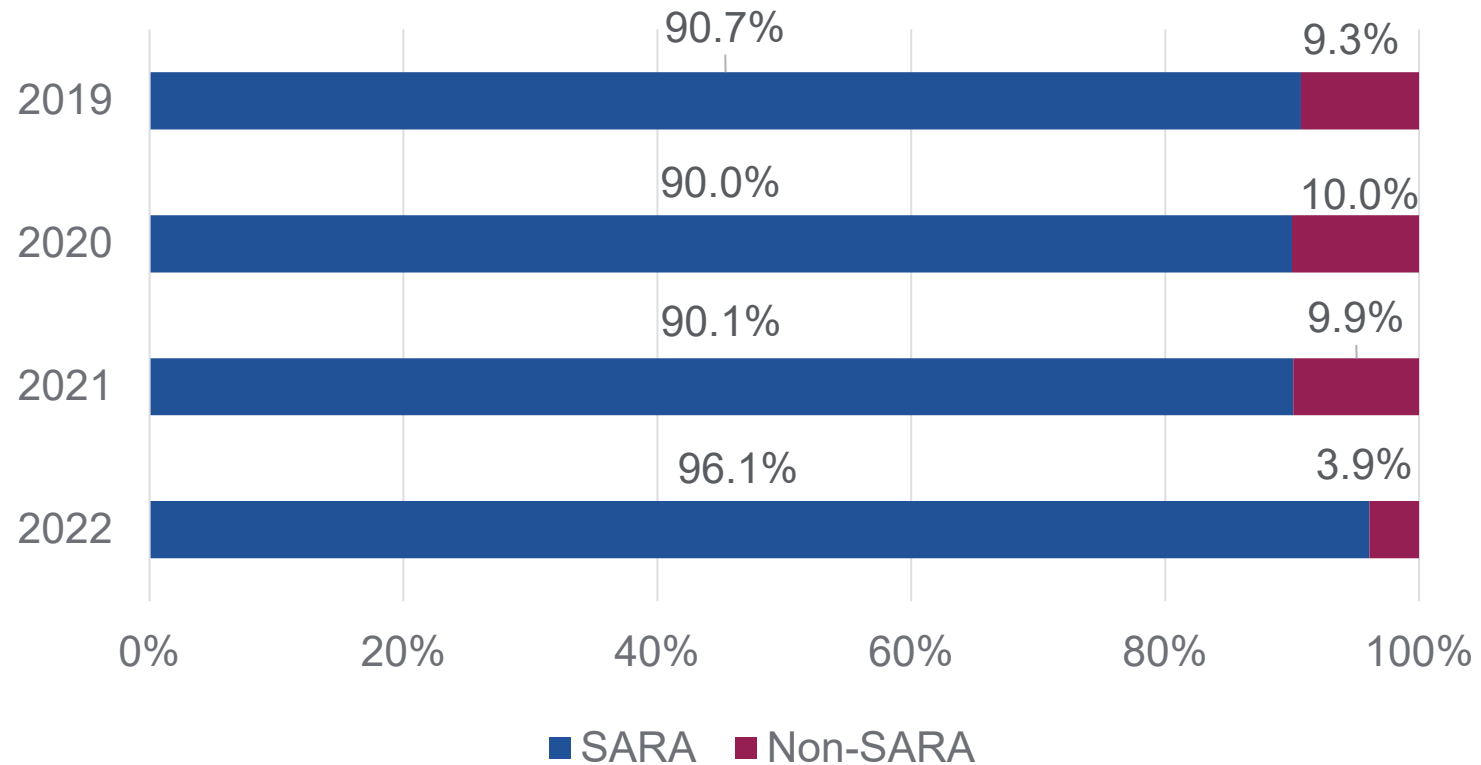
Reported Exclusively Distance Education Enrollment by Sector 2021-2022



2022 Reporting Institutions and Out-of-State EDEE by Sector



Reported SARA & Non-SARA State's EDEE 2019-2022 (out-of-state enrollment only)



QUESTIONS ABOUT EDEE?

Please use the Q&A!



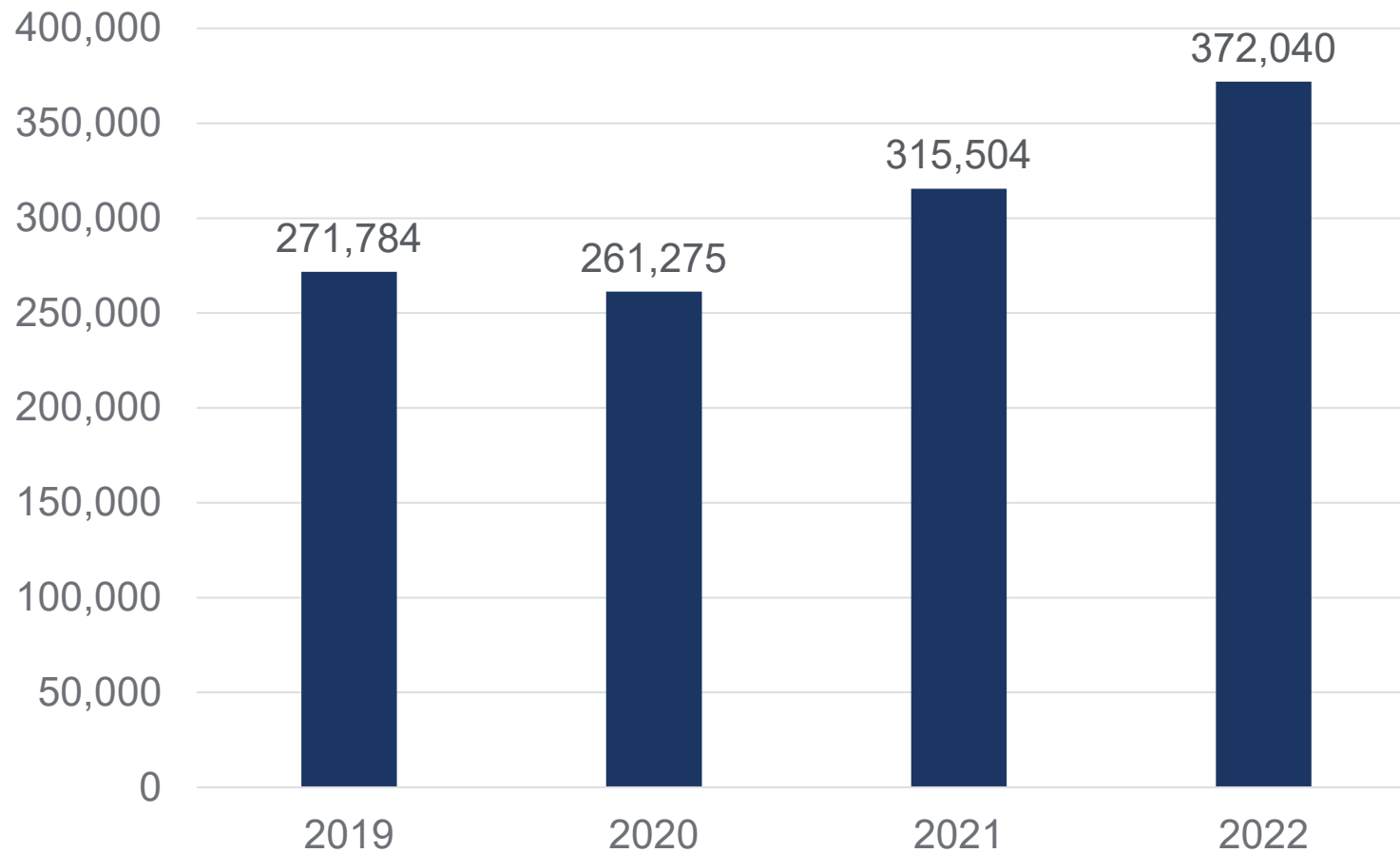
Out-of-State Learning Placements (OOSLP)

What are OOSLP?

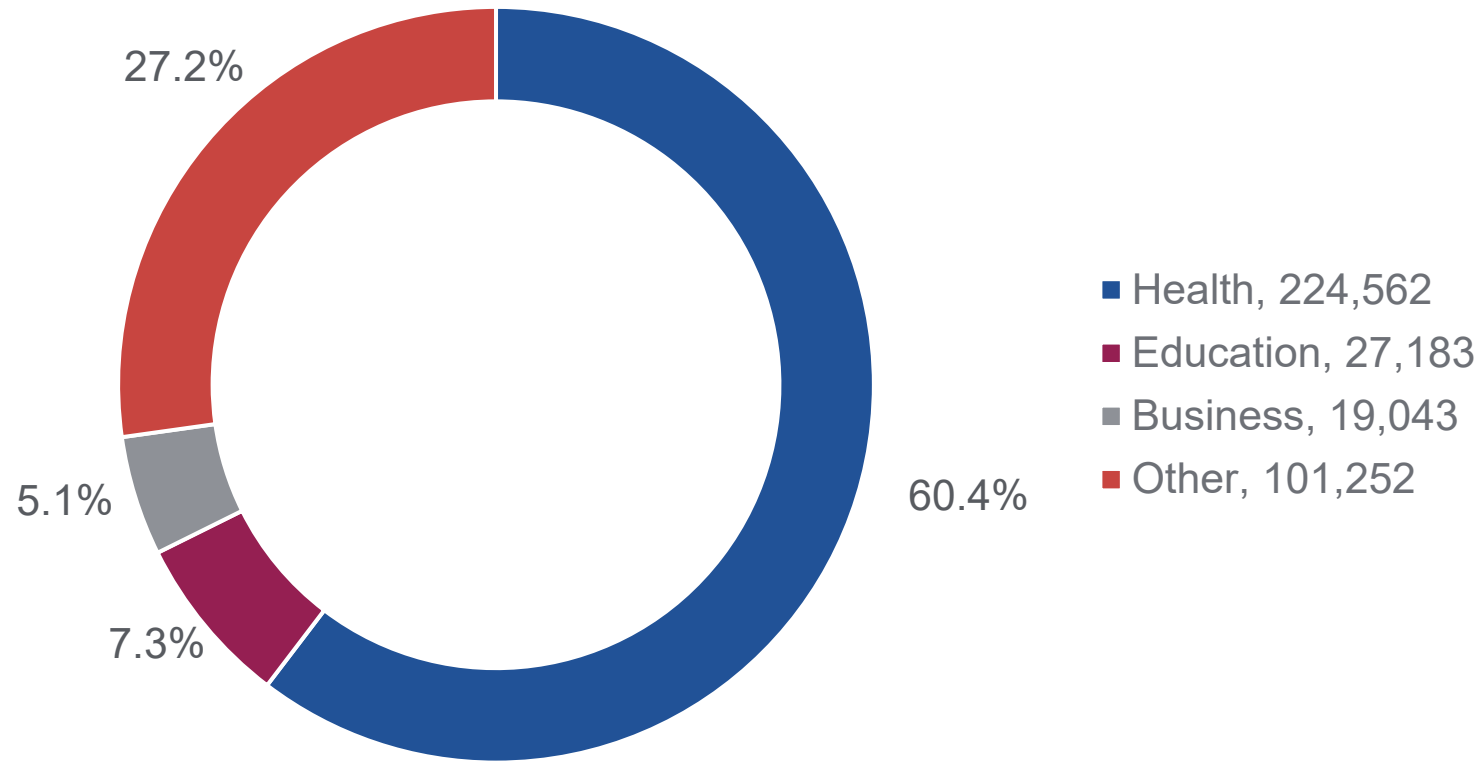
- Learning placements are on-ground, out-of-state experiential learning activities
- OOSLP include clinical rotations, student teaching, internships, and other similar activities
- OOSLP are often a required part of obtaining a degree and/or license to practice a particular profession
- Note that reporting **includes on-ground students** as well as distance education students



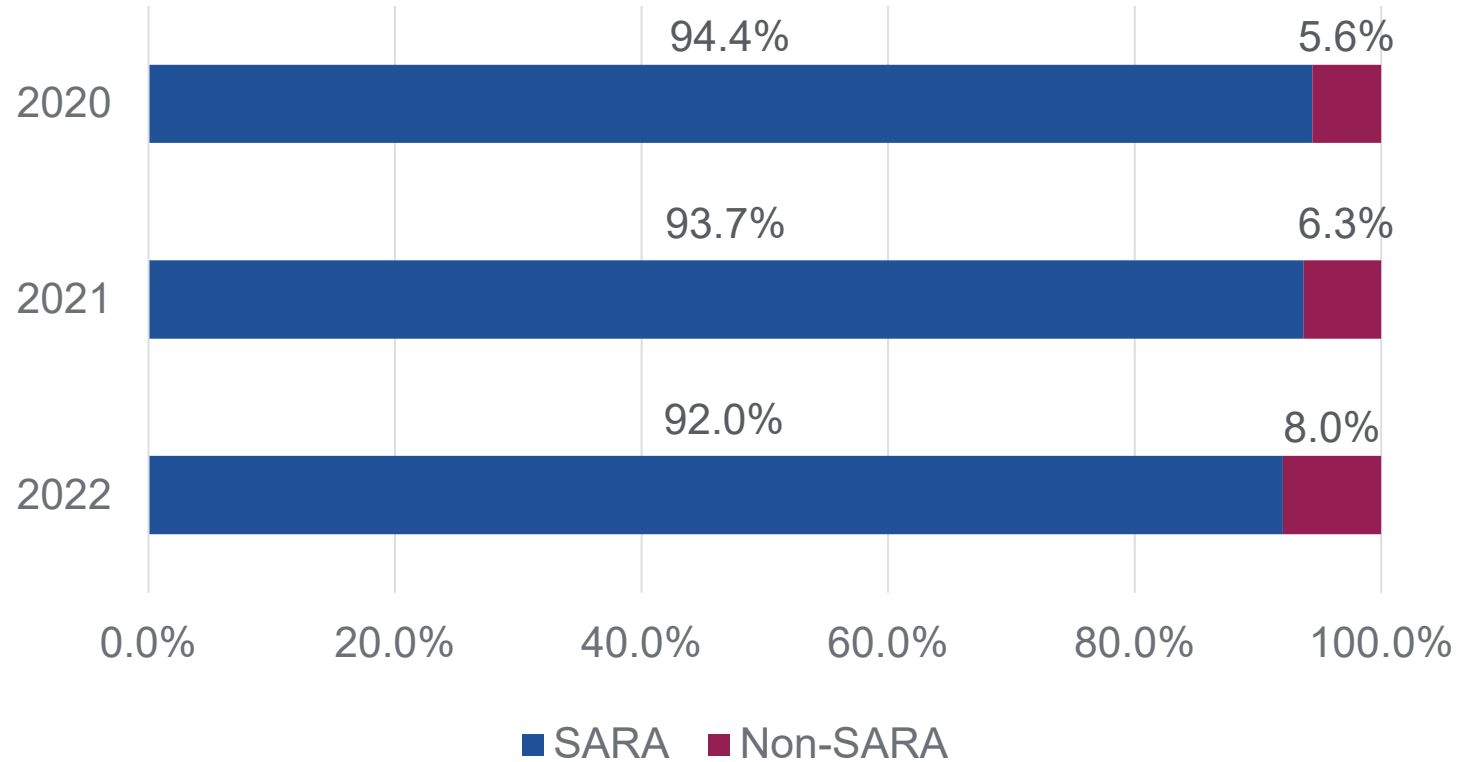
Out-of-State Learning Placements Reported 2019-2022



Out-of-State Learning Placements Reported by CIP Code Program Areas



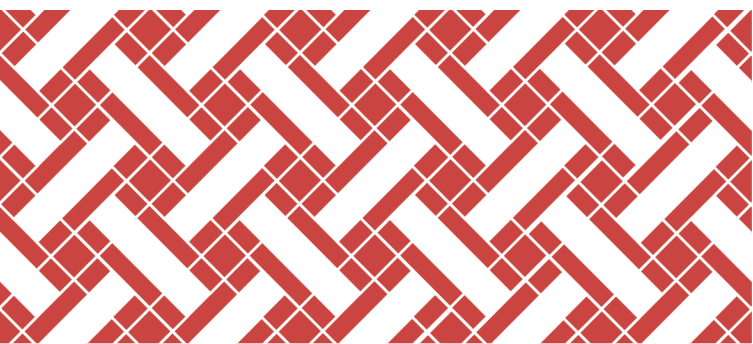
2020-2022 Reported SARA and Non-SARA States' OOSLP



QUESTIONS ABOUT OOSLPs?

Please use the Q&A!





Poll Questions:

4. Have you used the SARA data before in any way?

5. If yes, how have you used the SARA data? Select all that apply.



NC-SARA'S Data Dashboards: A Demonstration

QUESTIONS ABOUT DATA DASHBOARDS?

Please use the Q&A!





Resources & Important Dates

NC-SARA's RESOURCES FOR DATA REPORTING



ABOUT

STUDENTS

STATES

INSTITUTIONS

RESEARCH AND DATA

Institution Directions for Data Reporting

SARA Learning Station



Powered by NC-SARA

Important Annual Data Reporting Dates

- **2023 Annual Data Handbook Available:** January 2024
- **2023 Annual Data Collection Webinar:** February / March 2024
- **2023 Annual Data Collection Window:** May 15 – June 15, 2024

ANY ADDITIONAL QUESTIONS?
data@nc-sara.org / info@nc-sara.org



Thank You!



@NCSARA_News



<https://www.linkedin.com/company/nc-sara>

NC-SARA Website:
www.nc-sara.org