

NC-SARA Annual Data Reporting

May 15 – June 15 Annually

Fall 2024 Exclusively Distance Education Enrollment & 2024 Out-of-State Learning Placements

March 5, 2025

Welcome!



Marianne Boeke, Ph.D.
President



Webinar Guidance

- Please use the Question & Answer feature for questions.
- The Closed Caption option is available.
- The webinar will be recorded.
- This presentation and other resources referenced will be posted on the NC-SARA website: *Institution Directions for Data Reporting page*.

NC-SARA Data Team



Rachel Christeson
Director for Research
and Data Analysis



Terri Taylor-Straut
Senior Director,
Educational Programs



Emma Hidalgo
Research Data Analyst &
Administrative Coordinator



Today's Agenda

About SARA

2023 Data Highlights

Data Reporting Overview

Exclusively Distance Education Enrollment (EDEE) Reporting

➤ Q&A on EDEE Reporting

Out-of-State Learning Placement (OOSLP) Reporting

➤ Q&A on OOSLP Reporting

Annual Data Reporting Resources

Dates for 2024 Data Reporting in 2025



About SARA



What is SARA?

State Authorization Reciprocity Agreements (SARA) is an **agreement** amongst member states, districts, and territories that establishes comparable national standards and streamlines regulations, fees, and approvals for institutions offering interstate distance education programs. More than 2,400 institutions in 49 member states, the District of Columbia, Puerto Rico, and the U.S. Virgin Islands all voluntarily participate in SARA.

What is NC-SARA?

The National Council for State Authorization Reciprocity Agreements (NC-SARA) is a private nonprofit **organization** [501(c)(3)] that in partnership with the four regional compacts coordinates the implementation of SARA nationally. NC-SARA supports, facilitates, and serves the regional compacts, the regional steering committees, the State Portal Entities, and SARA participating institutions.



SARA Partners

Institutions

Over 2,400 institutions voluntarily **participate** in SARA
Institutions are reviewed for renewal annually by the SPE

States (states/districts/territories)

52 states are **members** of SARA
State are reviewed every two years for SARA Membership

Regional Compacts (MHEC, NEBHE, SREB, WICHE)

Oversee SARA in their region

State Portal Entities (SPE)

One SPE for each SARA member state

Regional Steering Committees (RSC)

One RSC for each regional compact



Why NC-SARA Requires Data Reporting

Collecting, reporting, and analyzing data about interstate delivery of distance education are important parts of the NC-SARA mission.

1. Many states required institutions operating in their state to report data prior to SARA.
2. Data reporting was an important element agreed upon during the creation of SARA.
3. NC-SARA has maintained a strong commitment to transparency in data reporting since its inception.
4. Data collection and reporting help measure the impact of SARA nationally and track changes in SARA-participating institutions and in SARA member states over time.

What Data are Reported?

Exclusively Distance Education Enrollment (EDEE): SARA-participating institutions must annually report the number of students engaged exclusively in distance education who are enrolled at the institution. The EDEE data must be disaggregated by state, territory, or district where the learning takes place. These EDEE data need to include both degree and non-degree for-credit courses.



What Data are Reported?

Out-of-State Learning Placements (OOSLP): Institutions participating in SARA must annually report to NC-SARA the number of their students engaged in certain OOSLP activities, such as clinical rotations, internships, student teaching, etc., disaggregated by state and two-digit Classification of Instructional Programs (CIP) codes as assigned by the U.S. Department of Education.





2023 Data Highlights: Reported to NC-SARA in Spring 2024

Gratitude to Institution Staff



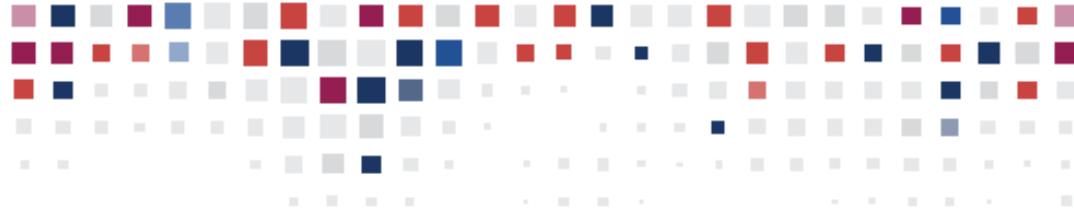


National Council for
State Authorization
Reciprocity Agreements

MHEC • NEBHE • SREB • WICHE

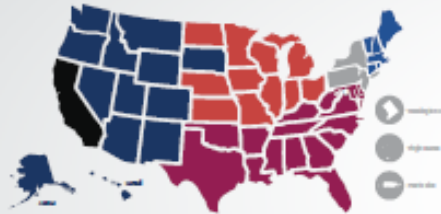
DATA REPORT

Fall 2023 Exclusively Distance
Education Enrollment Report & 2023
Out-of-State Learning Placements



NC-SARA's 9th annual data report and dataset provide insights into the ways that postsecondary education continues to evolve and change. NC-SARA data reporting captures students enrolled exclusively in distance education courses and out-of-state learning placements from SARA-participating institutions.

FAST FACTS



49 states, the District of Columbia, Puerto Rico, and the U.S. Virgin Islands are members of SARA

2,403

Data was collected from 2,403 SARA-participating institutions, a 2% increase over 2022

1,612,617

Number of students attending out-of-state institutions exclusively via distance education through SARA in Fall 2023

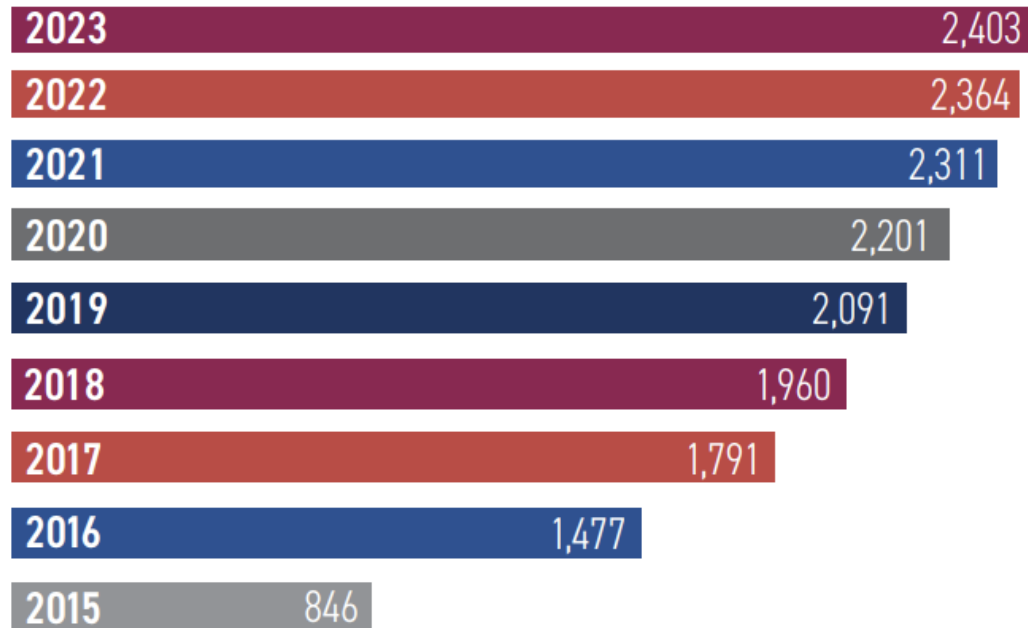
431,635

Number of out-of-state learning placements (OOSLP) for calendar year 2023

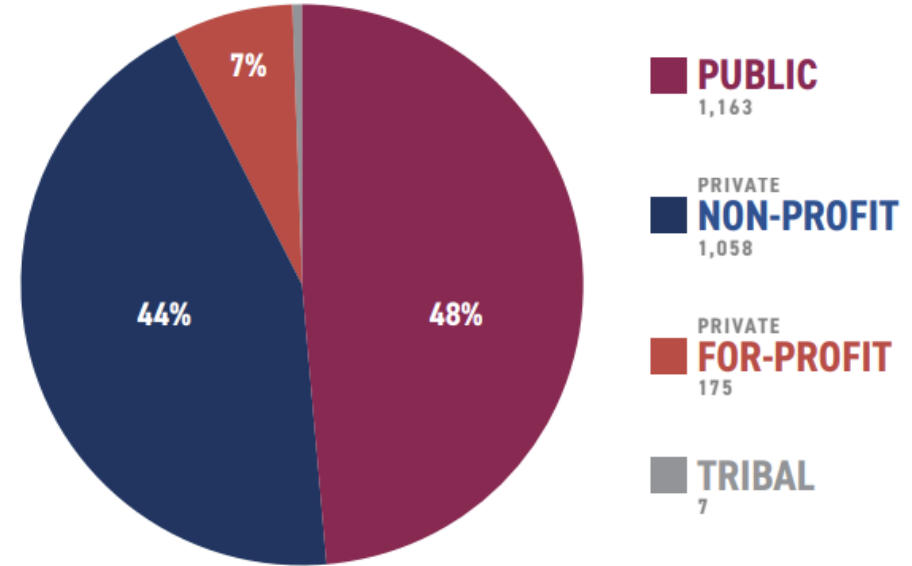
SARA-PARTICIPATING INSTITUTIONS

SARA PARTICIPATION CONTINUES TO INCREASE

The number of institutions participating in SARA has continued to increase, with 39 more institutions reporting data from 2023 than from 2022.



PUBLIC INSTITUTIONS CONTINUE TO MAKE UP LARGEST SECTOR IN SARA



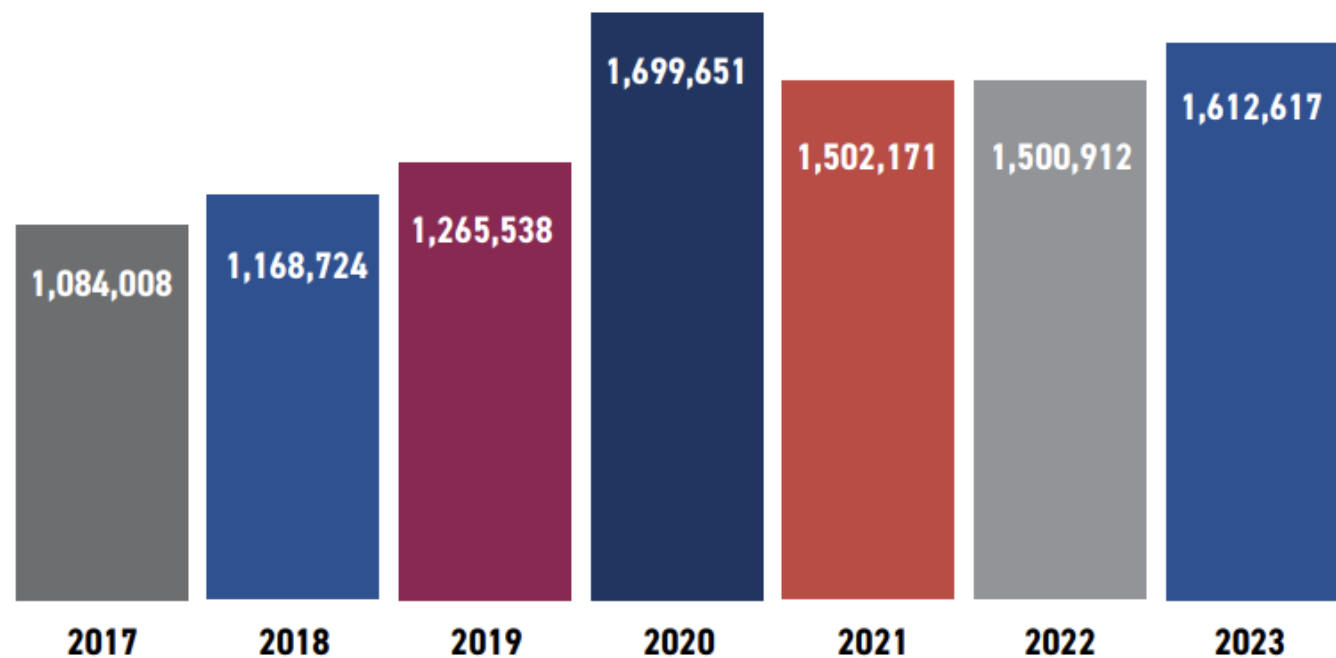
Note that percentages may not add up to 100 due to rounding.

EXCLUSIVELY DISTANCE EDUCATION ENROLLMENTS



In Fall 2023, more than **1.6 million students** attended out-of-state institutions exclusively via distance education through SARA. This is an increase from 1.5 million students in both Fall 2022 and Fall 2021.

TOTAL EXCLUSIVELY DISTANCE EDUCATION ENROLLMENTS THROUGH SARA



OUT-OF-STATE LEARNING PLACEMENTS

The largest out-of-state learning placements (OOSLP) were in **healthcare-related programs (61.5%)**, followed by **education (6.9%)** and **business (4.6%)**. The remaining **27.0% of OOSLPs were in a variety of fields**, such as engineering and social sciences.

In addition to exclusively distance education enrollments, SARA allows reciprocity for certain **on-ground** out-of-state experiential learning activities called “out-of-state learning placements” (OOSLP). Out-of-state learning placements are on-site learning placements that occur in a state other than the home state of the institution. They include clinical rotations, student teaching, internships, and other similar activities, many of which are related to workforce development needs. They are also often required as part of obtaining a degree and/or license to practice in a particular profession.



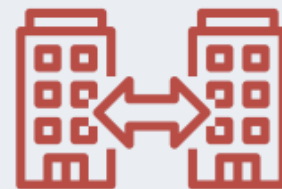
61.5%

Health Professions



6.9%

Education



4.6%

Business



27.0%

Variety of Fields

Data Dashboards

NC-SARA is pleased to share new interactive data dashboards, below. These dashboards include all the data NC-SARA has been sharing publicly all along (and includes the most recent data collected from Fall 2023), but in an easier format for your access and use. Begin with the Instructions & Definitions tab, below, to learn how to use the dashboards and what the terminology means, and then feel free to move through the dashboards by using the tabs at the top. If you are seeking the previously shared downloadable data files, or if you need additional assistance with these dashboards or NC-SARA data in general, please contact: data@nc-sara.org.

To download any of the charts or data tables, select the image of the square with downward pointing arrow in the bottom right corner of the dashboard. The dashboards can be downloaded as an image, PDF, PowerPoint, or where applicable, a crosstab in Excel or CSV format.

 Instructions & Definitions	Reporting Institutions	Total Exclusively Distance Education Enrollment	Incoming Exclusively Distance Education Enrollment	Outgoing Exclusively Distance Education Enrollment	Additional Reports & Raw Data Files	Incoming Learning	
---	------------------------	---	--	--	-------------------------------------	-------------------	---

NC-SARA Data Dashboards Instructions & Definitions

Updated 10/30/24

How to use the dashboards:

The purpose of these dashboards are to provide the annual exclusively distance education enrollment and out-of-state learning placement data collected by NC-SARA. The dashboards allow you to quickly view individual region or state data, as well as examine trends over time.



Data Reporting Overview



Poll Question:

Is this the first year that you have been involved in NC-SARA Data Reporting?

Communications About Data Reporting

All active SARA contacts will receive emails:

- Notification on May 15 that the NC-SARA Data Reporting Portal is open.
- Reminders during the reporting window.
- Confirmation emails will be sent upon successful submission of EDEE and OOSLP data.

PRO TIPS:

- Determine **who** will internally coordinate your institution's reporting.
- Ensure that institutional staff who will report the data are **active contacts** in the portal.
- View prior year's data using the **NC-SARA Data Dashboards**.

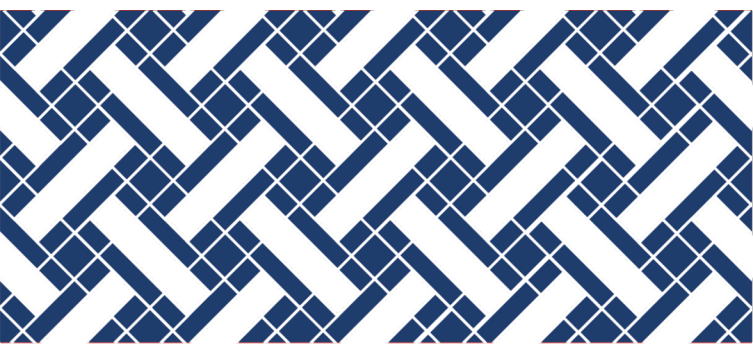
New & Notable for 2024 Reporting in 2025

The following items are new or notable for the 2025 reporting period:

- Beginning with the reporting of 2024 data in the spring of 2025, **all institutional EDEE and OOSLP data will be reported using new data reporting templates**. These templates are available on the [Institution Directions for Data Reporting](#) page of the NC-SARA website.
- **The EDEE and OOSLP Templates will be uploaded using the NC-SARA Data Reporting Portal**. All active institutional contacts will receive an email invitation to report on May 15, 2025.
- **Report each OOSLP**. Prior to 2024, the handbook was not clear about whether students doing multiple learning placements in the same state and program area should be reported more than once. Please report each learning placement rather than only counting the individual student once. Reporting each learning placement rather than the individual student is required beginning with 2024 OOSLP reporting in 2025.

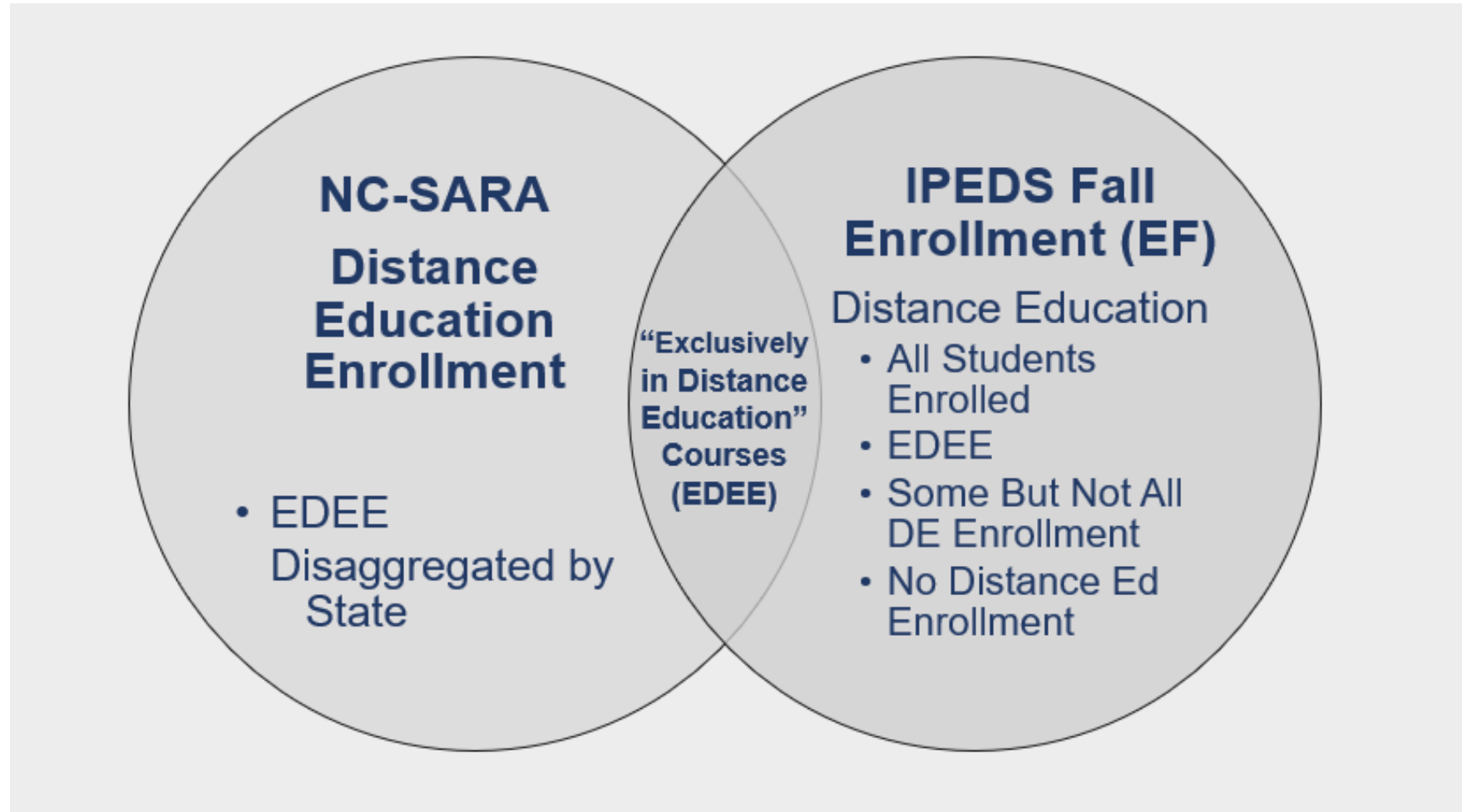
Huge Thanks to Our Pilot Institutions





Exclusively Distance Education Enrollment (EDEE) Data Reporting

Reporting Requirements of NC-SARA & IPEDS EF





EDEE Reporting Guidance

1. Report EDEE delivered ***both in the home state of the institution and outside the home state of the institution.***
2. Disaggregate those enrollments by the state, territory, or district where the students are located, *including the home state.*
3. Use the means you currently employ to determine students' locations.
4. Report the actual number of students enrolled exclusively at a distance in each state.
5. Report Branch Campus EDEE if reported to IPEDS.



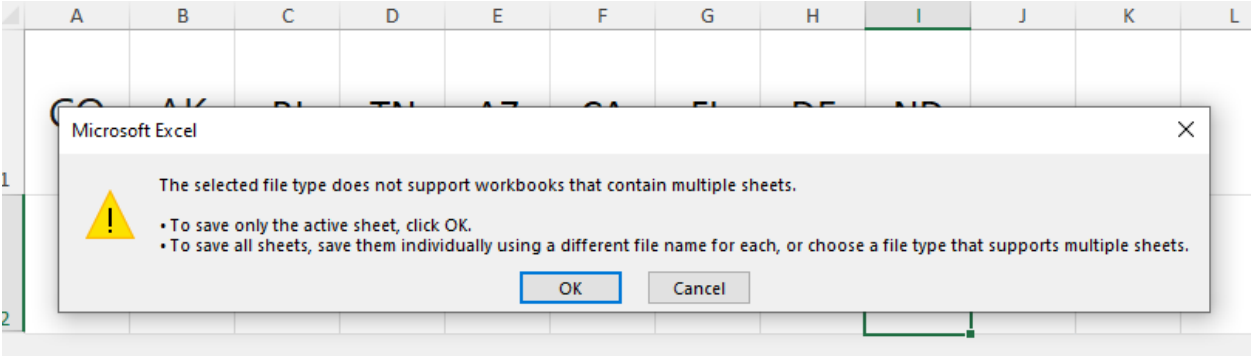
Prepare Your EDEE Data

1. Gather your data.
2. Download the EDEE Template from the [Institution Directions for Data Reporting](#) page on the NC-SARA website.
3. Enter your data on the EDEE Template tab of the worksheet.
(Details on page 10 of the handbook)
5. Save your data as a **.csv** file.
6. Report Branch Campus EDEE if reported to IPEDS.

Sample Populated EDEE Template

	A	B	C	D	E	F	G	H	I
1	CO	AK	RI	TN	AZ	CA	FL	DE	SC
2	5	6	4	8	9	156	222	5	1

Example Prompt to Save Only the Active Sheet





Upload Your EDEE Data

1. Access the NC-SARA Data Reporting Portal.
 - <https://nc-sara.org/institutional-data-reporting>
2. Start with email verification.
3. Choose which data submission to complete.
5. Select your institution.
6. Report your data.
7. Review your data for accuracy.
8. Indicate whether your data includes any branch campuses.
9. Comment on the Data Anomalies (if any)
10. Click **Finish** to complete the data upload.
11. You and all active contacts will receive a confirmation email.

PRO TIP:

- If there are no EDEE to report, use the check box in the form to report zero.

NC-SARA Data Reporting



NC-SARA Website

Support

Welcome to the NC-SARA Data Reporting Portal for Exclusively Distance Education Enrollment (EDEE) and Out-of-State Learning Placements (OOSLP).

Data Reporting Submission

Every year, SARA-participating institutions are asked to report the number of students enrolled exclusively in distance education courses delivered both in the home state of the institution and outside the home state of the institution. This required data submission is based on the enrollment data your institution reported to the Integrated Postsecondary Education Data System (IPEDS). For SARA, that data is to be disaggregated by the state, territory, or district where the activity takes place.

SARA-participating institutions are also required to report certain learning placements in every state, territory, and district other than their own. Learning placements (clinical rotations, student teaching, internships, etc.) are a critical component of many instructional programs. Out-of-state learning placements include on-the-ground, out-of-state learning placements, both for on-campus/face-to-face courses as well as those associated with distance education courses.

Data Reporting Window: May 15 – June 15

While every effort has been made to provide clear instructions through the NC-SARA Data Reporting Handbook, the variety of institutional practices in determining student location and tabulating placement data make some institutional reporting decisions difficult to answer. Please use your best judgment and adopt and document an approach that ensures your institution's reporting is consistent from year-to-year and captures the requested information.

Important Reporting Instructions for NC-SARA Data Submission

Step-by-Step Guide:

1. Start with Email Verification:

- Click the Data Reporting Submission button on this page.
- Enter your email to initiate the verification process.

Access the NC-SARA Data Reporting Portal at:
<https://nc-sara.org/institutional-data-reporting>

Email Validation Page

Data Reporting Submission



Data Reporting

* Please enter your email

rchristeson@nc-sara.org

Next

Welcome Page with Instructions

Data Reporting Submission



Data Reporting

Exclusively Distance Education
Enrollment (EDEE)

INCOMPLETE

You have 5 Institutions with incomplete EDEE data

Start EDEE

Out-of-State Learning Placement
(OOSLP)

INCOMPLETE

You have 5 Institutions with incomplete OOSLP
data

Start OOSLP

Exit

EDEE Data Reporting Page

Data Reporting Submission



Exclusively Distance Education Enrollments

*Select the institution you want to upload for

Next

EDEE Data Upload Page

Data Reporting Submission



**National Council for
State Authorization
Reciprocity Agreements**

MHEC • NEBHE • SREB • WICHE

Exclusively Distance Education Enrollments: Test - Technical College

Please upload your file in .csv format. If your institution has no Exclusively Distance Education Enrollments to report, check the box below.

This institution has zero Exclusively Distance Education Enrollments to report

• Upload CSV

Or drop files

Next

Sample EDEE Data Confirmation Page

Data Reporting Submission



Exclusively Distance Education Enrollments: Test - Technical College

Delaware: 4

District of Columbia: 2

Michigan: 4

Total: 10

*Does this look correct?

Yes

Next

EDEE Data Reporting: Branch Campus

Data Reporting Submission



National Council for
State Authorization
Reciprocity Agreements

MHEC • NEBHE • SREB • WICHE

Exclusively Distance Education Enrollments: Test - Technical College

* Does this report include branch campus activity?

Next

EDEE Comments Field

Data Reporting Submission



Exclusively Distance Education Enrollments: Test - Technical College

Your EDEE has been recorded. Please click "Finish" to finalize your data.

Comments (optional)

*Would you like to submit an EDEE for another Account you are associated with?

No

Finish

NOTE:

Please do **not** use this field to ask questions or update your institution's contact information.

Instead: Please use this field to explain anomalies in your data or provide context for your reported distance education enrollment data.

Form to Request to be Added as a Contact

Data Reporting Submission



Data Reporting

We couldn't find a contact in our system with that email address. To be added to our system, please fill out the form below. If you are affiliated with more than one institution, please list them all.

* First Name

Complete this field.

* Last Name

* Title

* Email

* State

* Institution

Previous

Next

NOTE:

NC-SARA staff will contact all active contacts to request confirmation that you should be added.

This may delay access to the Portal.

Upon approval, you will receive an email confirmation that you can now upload the data.



Frequently Asked Questions: EDEE

What if my institution doesn't report to IPEDS?

- Report as if you do.

How do we report Military Students?

- Report **where** they are taking the course.

What definition of “distance education” should we use?

- Use IPEDS' definitions. Details are in the *NC-SARA Data Reporting Handbook for Institutions*, pages 7-9 and Appendix A.

Should I include my institution's in-state students?

- Yes, NC-SARA has collected these data since 2018, as it provides important context when looking at exclusively distance education enrollments.



**Q&A
Regarding
EDEE
Reporting**



Out-of-State Learning Placement (OOSLP) Data Reporting



Poll Question:

Does your institution have a documented approach to collecting and reporting calendar year OOSLP?

OOSLP Reporting Guidance

Learning Placement Examples:

- Clinical Rotations
- Student Teaching
- Internships

Report **on-ground and online** student OOSLP.

OOSLP does **NOT** include in-state placements.

Report every **placement**, not every student.

Do **NOT** report virtual learning placements.

Criteria for Inclusion in OOSLP Reporting

There are no changes to the Criteria for Inclusion in OOSLP Reporting for 2024 in 2025.

1. The placement started between January 1, 2024, and December 31, 2024.
2. The placement is outside the home state of the SARA-participating institution.
3. The placement involves the physical presence of the student at the out-of-state location(s).
(Virtual placements are not reported.)
4. One or more of the following is true:
 - a. The placement was an activity required for degree completion.
 - b. The placement was an activity required for professional licensure.
 - c. The placement was offered for credit.
 - d. The placement was offered for a fee.

Placements that meet the above criteria should be disaggregated as follows:

- By two-digit CIP code;
- By the state in which the placement was made.



OOSLP Reporting: About CIP Codes

Classification of Instructional Programs (CIP) provides a taxonomic scheme that supports the accurate tracking, assessment, and reporting of fields of study and program completion activity.

- Use the new 2020 CIP Codes for reporting.
<https://nces.ed.gov/ipeds/cipcode/Default.aspx?y=56>
- NC-SARA uses the 47 **two-digit** CIP codes that represent program areas.

OOSLP Reporting: CIP Code Examples

13) EDUCATION.

13.01) Education, General.

[13.0101\) Education, General.](#)

13.02) Bilingual, Multilingual, and Multicultural Education.

[13.0201\) Bilingual and Multilingual Education.](#)

[13.0202\) Multicultural Education.](#)

[13.0203\) Indian/Native American Education.](#)

[13.0299\) Bilingual, Multilingual, and Multicultural Education, Other.](#)

13.03) Curriculum and Instruction.

[13.0301\) Curriculum and Instruction.](#)

13.04) Educational Administration and Supervision.

[13.0401\) Educational Leadership and Administration, General.](#)

[13.0402\) Administration of Special Education.](#)

[13.0403\) Adult and Continuing Education Administration.](#)

[13.0404\) Educational, Instructional, and Curriculum Supervision.](#)

[13.0406\) Higher Education/Higher Education Administration.](#)

[13.0407\) Community College Administration.](#)

[13.0408\) Elementary and Middle School Administration/Principalship.](#)

[13.0409\) Secondary School Administration/Principalship.](#)

[13.0410\) Urban Education and Leadership.](#)

OOSLP Reporting Guidance

Where are these numbers kept on campus?

- In the academic departments that have learning placements.
- Start with your SARA liaison or Institutional Research.

PRO TIPS:

- Document your approach to ensure consistency in reporting each year.
- Double-check your data from last year in the **NC-SARA Data Dashboards** for consistency.



Prepare Your OOSLP Data

1. Gather your data.
2. Download the OOSLP Template from the [Institution Directions for Data Reporting](#) page on the NC-SARA website.
3. Enter your data on the OOSLP Template tab of the worksheet.
(Details on page 26 of the handbook)
5. Save your data as a **.csv** file.
6. Report Branch Campus OOSLP.

Sample Populated OOSLP Template

	A	B	C
1	CIP Type	State List	Enrollment Count
2	01) Agriculture, Agriculture Operations, and Related Sciences	Alabama (AL)	4
3	50) Visual and Performing Arts	Colorado (CO)	10
4	12) Culinary, Entertainment, And Personal Services	Indiana (IN)	12
5	40) Physical Sciences	Tennessee (TN)	55
6	50) Visual and Performing Arts	Delaware (DE)	80
7	60) Residency Programs	Colorado (CO)	1
8	40) Physical Sciences	Delaware (DE)	4
9	41) Science Technologies/Technicians	Tennessee (TN)	3

Example Prompt to Save Only the Active Sheet

	A	B	C
1	CIP Type	State List	OOSLP Count
2	01) Microsoft Excel		4
3	50)		10
4	12)		12
5	40)		55
6	50)		80
7	60)		1
8	40) Physical Sciences	Delaware (DE)	4
9	41) Science Technologies/Technicians	Tennessee (TN)	3
10			

Microsoft Excel

The selected file type does not support workbooks that contain multiple sheets.

- To save only the active sheet, click OK.
- To save all sheets, save them individually using a different file name for each, or choose a file type that supports multiple sheets.

OK Cancel

Upload Your OOSLP Data

1. Access the NC-SARA Data Reporting Portal.
 - <https://nc-sara.org/institutional-data-reporting>
2. Start with email verification.
3. Choose which data submission to complete.
5. Select your institution.
6. Report your data.
7. Review your data for accuracy.
8. Indicate whether your data includes any branch campuses.
9. Comment on the Data Anomalies (if any)
10. Click **Finish** to complete the data upload.
11. You and all active contacts will receive a confirmation email.

PRO TIP:

- If there are no OOSLP to report, use the check box in the form to report zero.

NC-SARA Data Reporting



NC-SARA Website

Support

Welcome to the NC-SARA Data Reporting Portal for Exclusively Distance Education Enrollment (EDEE) and Out-of-State Learning Placements (OOSLP).

Data Reporting Submission

Every year, SARA-participating institutions are asked to report the number of students enrolled exclusively in distance education courses delivered both in the home state of the institution and outside the home state of the institution. This required data submission is based on the enrollment data your institution reported to the Integrated Postsecondary Education Data System (IPEDS). For SARA, that data is to be disaggregated by the state, territory, or district where the activity takes place.

SARA-participating institutions are also required to report certain learning placements in every state, territory, and district other than their own. Learning placements (clinical rotations, student teaching, internships, etc.) are a critical component of many instructional programs. Out-of-state learning placements include on-the-ground, out-of-state learning placements, both for on-campus/face-to-face courses as well as those associated with distance education courses.

Data Reporting Window: May 15 – June 15

While every effort has been made to provide clear instructions through the NC-SARA Data Reporting Handbook, the variety of institutional practices in determining student location and tabulating placement data make some institutional reporting decisions difficult to answer. Please use your best judgment and adopt and document an approach that ensures your institution's reporting is consistent from year-to-year and captures the requested information.

Important Reporting Instructions for NC-SARA Data Submission

Step-by-Step Guide:

1. Start with Email Verification:

- Click the Data Reporting Submission button on this page.
- Enter your email to initiate the verification process.

Access the NC-SARA Data Reporting Portal at:
<https://nc-sara.org/institutional-data-reporting>

Email Validation Page

Data Reporting Submission



Data Reporting

* Please enter your email

Next

Welcome Page with Instructions

Data Reporting Submission



Data Reporting

Exclusively Distance Education
Enrollment (EDEE)

INCOMPLETE

You have 5 Institutions with incomplete EDEE data

Start EDEE

Out-of-State Learning Placement
(OOSLP)

INCOMPLETE

You have 5 Institutions with incomplete OOSLP
data

Start OOSLP

Exit

OOSLP Data Reporting Page

Data Reporting Submission



Out-of-State Learning Placements

* Select the institution you want to upload for

Next

OOSLP Data Upload Page

Data Reporting Submission



Out-of-State Learning Placements: Test - Technical College

Please upload your file in .csv format. If your institution has no out-of-state learning placements to report, check the box below.

This institution has zero out-of-state learning placements to report

• Upload CSV

Or drop files

Next

Sample OOSLP Data Confirmation Page

Data Reporting Submission



Out-of-State Learning Placements: [Test - Technical College](#)

4 of 4 items

CIP Type	State/District/Territory	Enrollment Count
10) Communications Technologies/Technicians and Support Services	Arizona (AZ)	6
13) Education	Delaware (DE)	5
33) Citizenship Activities	Washington (WA)	13
05) Area, Ethnic, Cultural, Gender, and Group Studies	Utah (UT)	2

Total: 26

*Does this look correct?

Yes

Next

OOSLP Data Reporting: Branch Campus

Data Reporting Submission



Out-of-State Learning Placements: Test - Technical College

*Does this report include branch campus activity?

Finish

OOSLP Comments Field

Data Reporting Submission



Out-of-State Learning Placements: Test - Technical College

Your OOSLP has been recorded. Please click "Finish" to finalize your data.

Comments (optional)

*Would you like to submit an OOSLP for another Account you are associated with?

Finish

NOTE:

Please do **not** use this field to ask questions or update your institution's contact information.

Instead: Please use this field to explain anomalies in your data or provide context for your reported OOSLP data.

Branch Campus OOSLP Reporting

Branch Campus Example: A SARA-participating institution is located in West Virginia with a branch campus location in Pennsylvania.

1. If a branch campus student, living in Pennsylvania, attends exclusively online classes delivered through the West Virginia campus and participates in a learning placement in Pennsylvania – these learning placements ARE reportable to NC-SARA.
2. If a branch campus student, living in Pennsylvania, attends exclusively online classes delivered through the West Virginia campus and participates in a learning placement in West Virginia – these learning placements ARE NOT reportable to NC-SARA.
3. If a branch campus student, living in Pennsylvania, only takes courses residentially within the state of Pennsylvania and only participates in a learning placement within the state of Pennsylvania - these learning placements ARE reportable to NC-SARA.



Frequently Asked Questions: OOSLP

Should institutions report virtual internships?

- No, if the internship is fully online and the student is not physically present in another state, do not report the internship.

What if my institution has none of this information?

- Use the handbook and Out-of-State Learning Placement (OOSLP) Template to establish a system to collect and report these data.



Frequently Asked Questions: OOSLP

Since some students will have multiple placements, do we count the number of individual placements on the number of students who were placed?

➤ Count each student learning placement. If a student has multiple learning placements in the same state and same program area, count each placement. If a student has multiple learning placements in more than one state, count each placement, attributing them to the relevant states. If a student has multiple learning placements in more than one program area but the same state, count each placement, attributing them to the relevant program areas. Examples:

- A student at University of Wyoming participated in three OOSLP in Colorado during 2024, but at three different organizations. The University of Wyoming would report three learning placements in Colorado.
- A student at University of Colorado at Denver (UCD) participated in an OOSLP in spring 2024 under CIP code 13 in Arkansas; this same student then participated in another OOSLP in fall 2024 under CIP code 46 in Washington. UCD would report two placements, one in each state. If both learning placements were in the same state, both placements would be reported for that state, one under each CIP Code.



**Q&A
Regarding
OOSLP
Reporting**



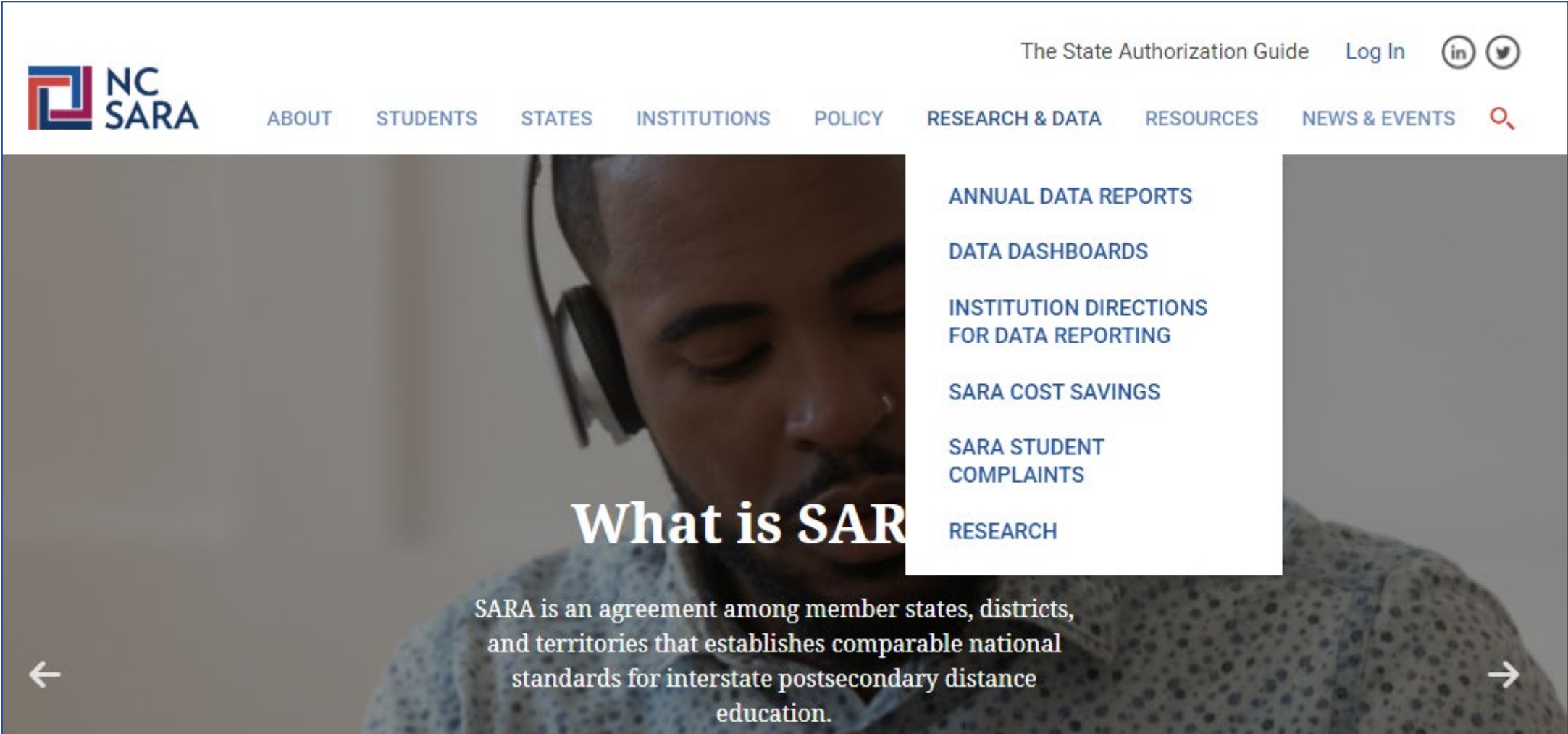
Poll Question:

**Do you have your institution team
in place to help with this work?**



Where to Find Data Reporting Resources

Institution Directions for Data Reporting: Your One-Stop Shop



The screenshot shows the NC SARA website interface. At the top left is the NC SARA logo. To the right of the logo is a navigation bar with the following links: ABOUT, STUDENTS, STATES, INSTITUTIONS, POLICY, RESEARCH & DATA, RESOURCES, and NEWS & EVENTS. Further right are links for 'The State Authorization Guide', 'Log In', and social media icons for LinkedIn and Twitter. A search icon is also present. Below the navigation bar is a large banner image featuring a man wearing a headset. Overlaid on the banner is the text 'What is SARA' in large white font, followed by a paragraph: 'SARA is an agreement among member states, districts, and territories that establishes comparable national standards for interstate postsecondary distance education.' A dropdown menu is open under the 'RESEARCH & DATA' link, listing the following items: ANNUAL DATA REPORTS, DATA DASHBOARDS, INSTITUTION DIRECTIONS FOR DATA REPORTING, SARA COST SAVINGS, SARA STUDENT COMPLAINTS, and RESEARCH. Navigation arrows are visible at the bottom left and right of the banner.

Institution Directions for Data Reporting: Your One-Stop Shop



SARA Learning Station: Resources for Institutional Staff



SARA Learning Station

- SARA POLICY MANUAL
- SARA RESOURCES FOR STATES & INSTITUTIONS
- SARA LEARNING STATION**
- STUDENT RESOURCES
- CONTACTS
- RESOURCE DIRECTORIES AND GUIDES
- NC-SARA MEETINGS & PRESENTATIONS
- SARA CALL TO ACTION
- COMMON HIGHER EDUCATION ACRONYMS

SARA Learning Station



Powered by NC-SARA

The SARA Learning Station is your one-stop shop to access NC-SARA's resources for learning about SARA. Learning resources for institutions have been developed in collaboration with our Regional Compact partners and SARA State Portal Entities. Institutions should always check with their [SARA State Portal Entity](#) for any state-specific requirements.

SARA Quick Start Guides

When institutions participate in SARA, they agree to a set of compliance requirements as detailed in the [SARA Policy Manual](#). SARA Quick Start Guides are intended to help institutions easily understand SARA requirements to help them maintain compliance, communicate with colleagues regarding SARA, and explain SARA to students and other stakeholders.

GO TO SARA QUICK START GUIDES



Foundations of NC-SARA Annual Data Reporting 2.2

In this course participants will learn about NC-SARA's annual data reporting that SARA-participating institutions complete, including why SARA policy requires annual data reporting, what data are reported and when, and how the data are analyzed and shared. In addition, the course addresses how the data may be used, and provides suggestions for coordinating annual data reporting activities for your institution. The course may be helpful as an introduction to the NC-SARA Data Reporting Handbook for Institutions, which is available on the Institution Directions for Data Reporting page of the NC-SARA website.



[Continue this course](#)

MODULES

ACHIEVEMENTS

	Getting Started: Foundations of NC-SARA Annual Data Reporting (2 lessons)
	0% My Score
	Fundamentals of NC-SARA Annual Data Reporting (3 lessons)
	0% My Score
	Using the Data (2 lessons)
	0% My Score
	Preparing Your Institution for NC-SARA Data Collection (1 lesson)
	0% My Score
	Wrapping Up Your Learning (5 lessons)
	0% My Score

Data Dates for 2024 reporting in 2025

Data reporting window is May 15 – June 15, 2025



- **Oct. 2025:** Annual Data Report & NC-SARA Dashboards will be published on website



**Final
Questions?**

Thank You!



CONTACT US!

For questions about data reporting, please email:
data@nc-sara.org

NC-SARA Website:
www.nc-sara.org



<https://www.linkedin.com/company/nc-sara>