

2024 SPE Annual Conference

Universal SARA Approach to Strengthening Closure Protocols

Wednesday, September 11, 2024





TODAY'S AGENDA & PANELISTS

Moderator – Welcome and Introductions

- **Elisa Jaden**, Ed.S., SARA Director, Southern Regional Education Board

Presenter – Academic Records (Records Retention)

- **Kirk Shook**, Ed.D., Executive Director, Georgia Nonpublic Postsecondary Education Commission (GA SPE)

Presenter – Teach-Out Plans/Teach-Out Agreements

- **Alex Nally**, Deputy General Counsel, Massachusetts Department of Higher Education (MA SPE)

Presenter – Financial Arrangements

- **Marianne Boeke**, Ph.D., President, National Council State Authorization Reciprocity Agreement

There will be time for Q&A at the end of the session.

Institutional Closures Working Group

Purpose

The Institutional Closures Working Group was established to provide a structured and comprehensive approach to managing the process of closing institutions. The purpose of the working group is to ensure that closures of SARA-participating institutions are conducted in a manner that is strategic, transparent, and sensitive to the needs of all stakeholders.

Objectives

- ❖ Ensure transparent communication and proper planning for institutional closures.
- ❖ Protect students' rights and ensure the continuity of their education.
- ❖ Maintain regulatory compliance and uphold the integrity of the SARA framework.
- ❖ Identify policy and practice gaps in state, federal, and accreditation regulatory and oversight activities.
- ❖ Identify opportunities for increased collaboration and cooperation with other members of the regulatory triad in addressing closures.





ACADEMIC RECORDS (RECORDS RETENTION)

Kirk Shook



ACADEMIC RECORDS (RECORDS RETENTION)

Provide a secure and accessible method for students to obtain their academic records indefinitely.



ACADEMIC RECORDS SUBCOMMITTEE

- Goal
 - Develop plan for potential policy modifications to help ensure access to student records in the event of a closure
- Progress so far
 - Two meetings (with a meeting schedule of approx. every two weeks planned)
 - Identified 8 different problems related to record retention at closure (e.g., obtaining documents after employees are terminated, ensuring SPE and state work together, problems working with third parties, etc.)



ACADEMIC RECORDS SUBCOMMITTEE

- Progress so far (continued)
 - Developed 10 potential survey questions for SPEs related to collection of records at closure
- Next Steps
 1. Continue to identify potential problems that need to be solved (plan to invite guest speakers/experts in this area to provide suggestions and insights to committee)
 2. Develop solutions to each problem identified
 3. Give specific recommendations for policy changes





ACADEMIC RECORDS (RECORDS RETENTION)

What plan does your SPE have currently to collect student records at the time of a closure? In other words, who would collect records at a closure?



TEACH-OUT PLANS/ TEACH-OUT AGREEMENTS

Alex Nally



TEACH-OUT PLANS/ TEACH-OUT AGREEMENTS

Institutions must create detailed teach-out plans to ensure students can complete their programs. These plans should be approved by the SARA State Portal Entity. As part of the process, institutions should be able to identify partner institutions willing to accept transferring students and ensure minimal disruption to their education.





TEACH-OUT PLANS/ TEACH-OUT AGREEMENTS

How has your SPE office managed teach-out arrangements for SARA students in the past?

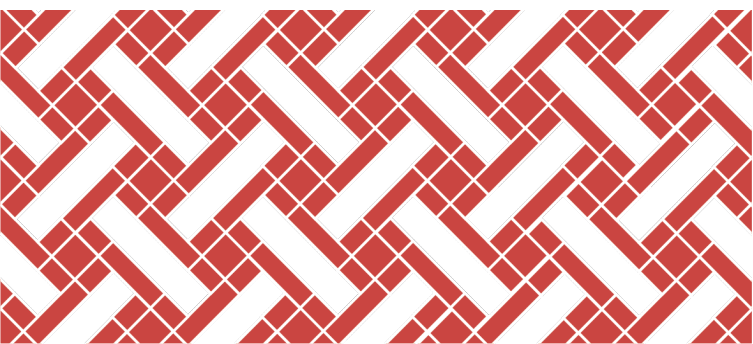




TEACH-OUT PLANS/ TEACH-OUT AGREEMENTS

How and when does your office engage other SPEs, regional compacts, NC-SARA, if at all in relation to teach-out plans/closures?





FINANCIAL ARRANGEMENTS

Marianne Boeke



FINANCIAL ARRANGEMENTS

Clearly outline procedures for refunding tuition and fees, including pro-rata refunds where applicable.

Additionally, consider financial mechanisms for tuition recovery and/or surety bonds.





FINANCIAL ARRANGEMENTS

**In what ways can SPEs effectively
navigate financial risk mitigation in
relation to
SARA institutions?**





FINANCIAL ARRANGEMENTS

What measures, if any, has your state implemented in relation to financial risk mitigation in relation to SARA institutions?



Next Steps

The Working Group will:

- Make progress in all 3 topic areas
- Draft one or more proposals for submission through the 2025 SARA PMP.
- Develop strategies for disseminating best practices to the SPE community



CLOSURES WORKING GROUP MEMBERS

- **Daniel Abankwa**, Illinois Board of Higher Education
- **Sara Appel**, MHEC
- **Emily Bjornberg**, Connecticut Office of Higher Education
- **John Cavanaugh**, NC-SARA Board Member
- **Tiamekia Cezaire**, Massachusetts Department of Higher Education
- **Alexandra Chaillou**, Maryland Higher Education Commission
- **Elisa Jaden**, SREB
- **Patrick Lane**, WICHE
- **Sam Loftin**, Washington Student Achievement Council, & NC-SARA Board Member
- **Molly Hall-Martin**, WICHE
- **Stephanie McCann**, Ohio Department of Higher Education
- **Ross Miller**, Indiana Commission for Higher Education/Indiana Board for Proprietary Education
- **Alex Nally**, Massachusetts Department of Higher Education
- **Charlotte Ochs**, NEBHE
- **Jenny Parks**, MHEC
- **Shelley Plutto**, W-SARA
- **Elise Scanlon**, NC-SARA Board Member
- **Kirk Shook**, Georgia Nonpublic Postsecondary Education Commission
- **Jeannie Pauline Yockey-Fine**, NC-SARA





Questions



Thank you!



<https://www.linkedin.com/company/nc-sara>



National Council for
State Authorization
Reciprocity Agreements

MHEC • NEBHE • SREB • WICHE