

SARA Resources & Services: Data & SARA Source Update

Rachel Christeson, Director, Research & Data Analysis, NC-SARA
Emily Bjornberg, Senior Consultant,
Connecticut Office of Higher Education

SPE Conference
September 11, 2024



National Council for
State Authorization
Reciprocity Agreements

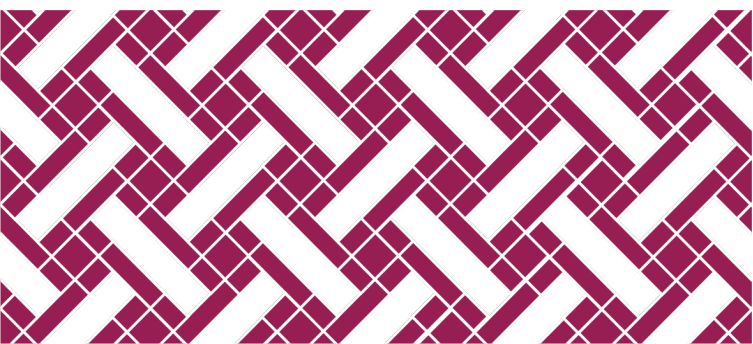
MHEC • NEBHE • SREB • WICHE

Data & SARA Source Update



Agenda:

- 2023 Data Reporting
- Changes for 2025 Data Collection
- Other Data Resources
- SARA Source Update
- Data Advisory Committee Work



2023 Data Reporting



What is the SARA Data?

Exclusively Distance Education Enrollment (EDEE)

- Students enrolled exclusively in distance education courses
- Same enrollment reported to IPEDS (Fall EF report) – but disaggregated by state
- Includes in-state and out-of-state

Out-of-State Learning Placements (OOSLP):

- Learning placements are on-ground, out-of-state experiential learning activities
- On-ground and online students who participate in an OOSLP are included
- OOSLP Does NOT include In-State

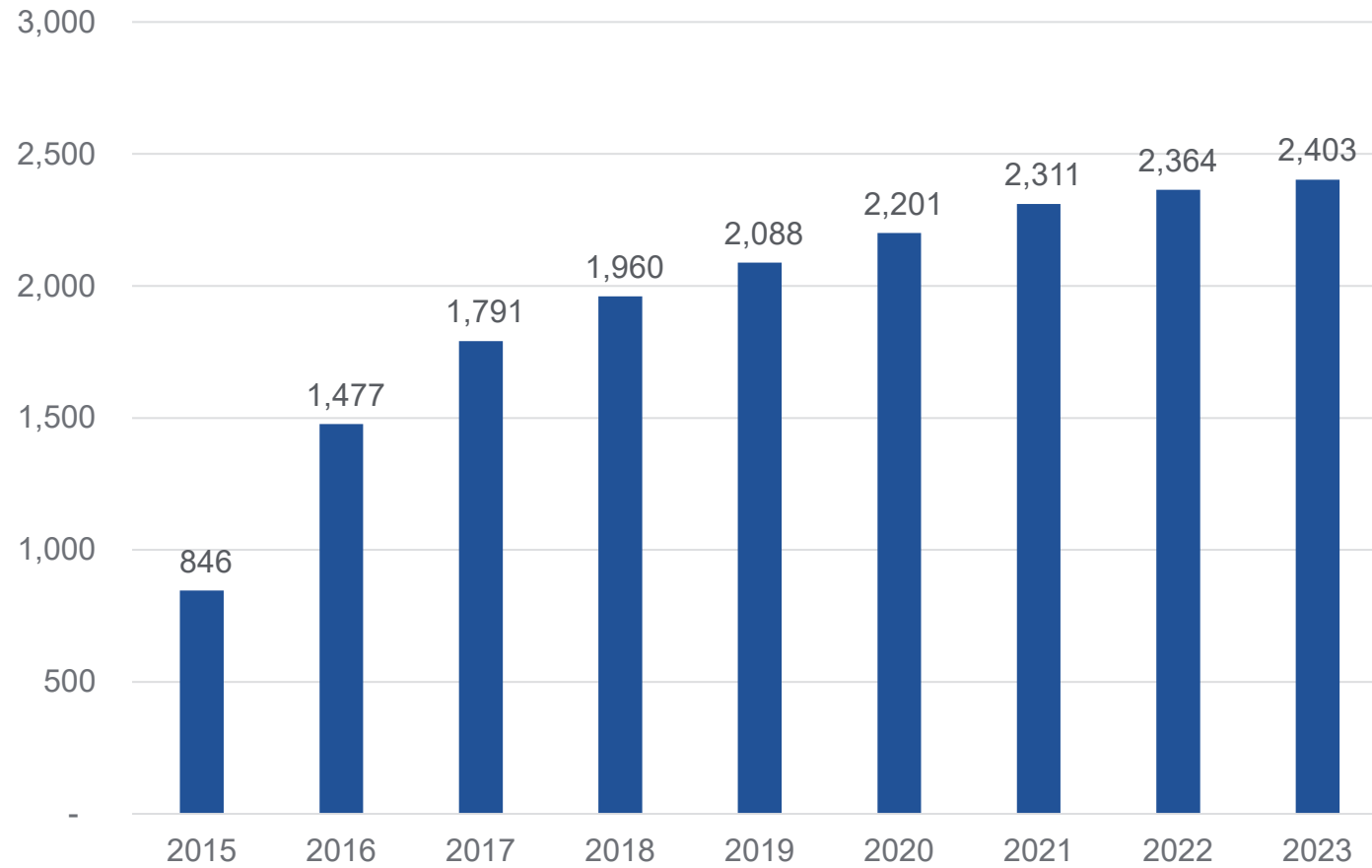
Methodology

SARA Data Reporting Window is May 15 – June 15 each year

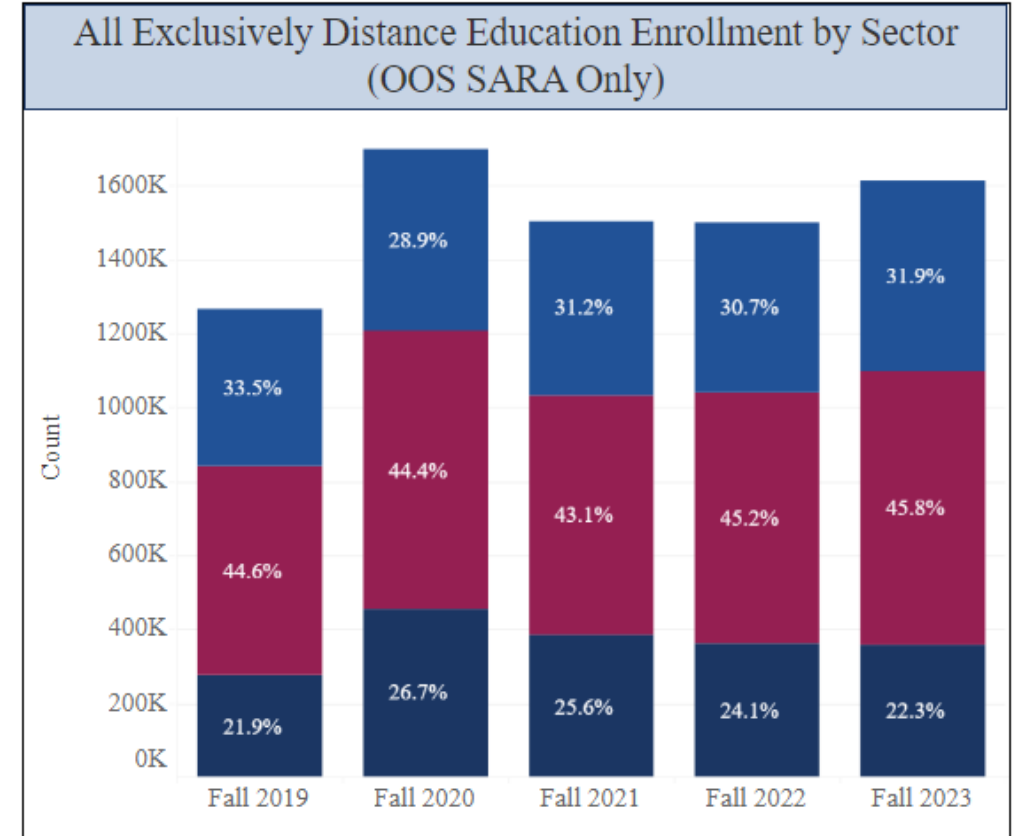
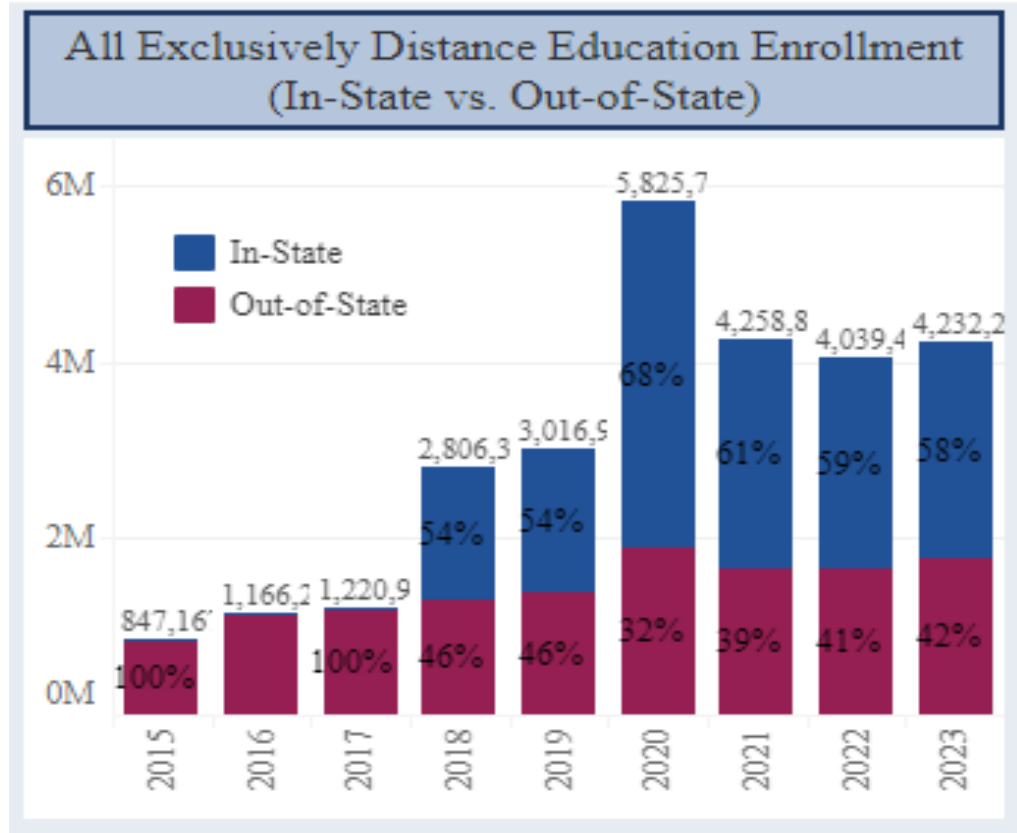
2,428 Institutions were sent email requests to report

- 25 exemptions were extended
 - 23 non-renewals or institutional closures
 - 1 joined near the end of 2023
 - 1 exemption given due to extreme staff shortage
- 0 institutions did not report

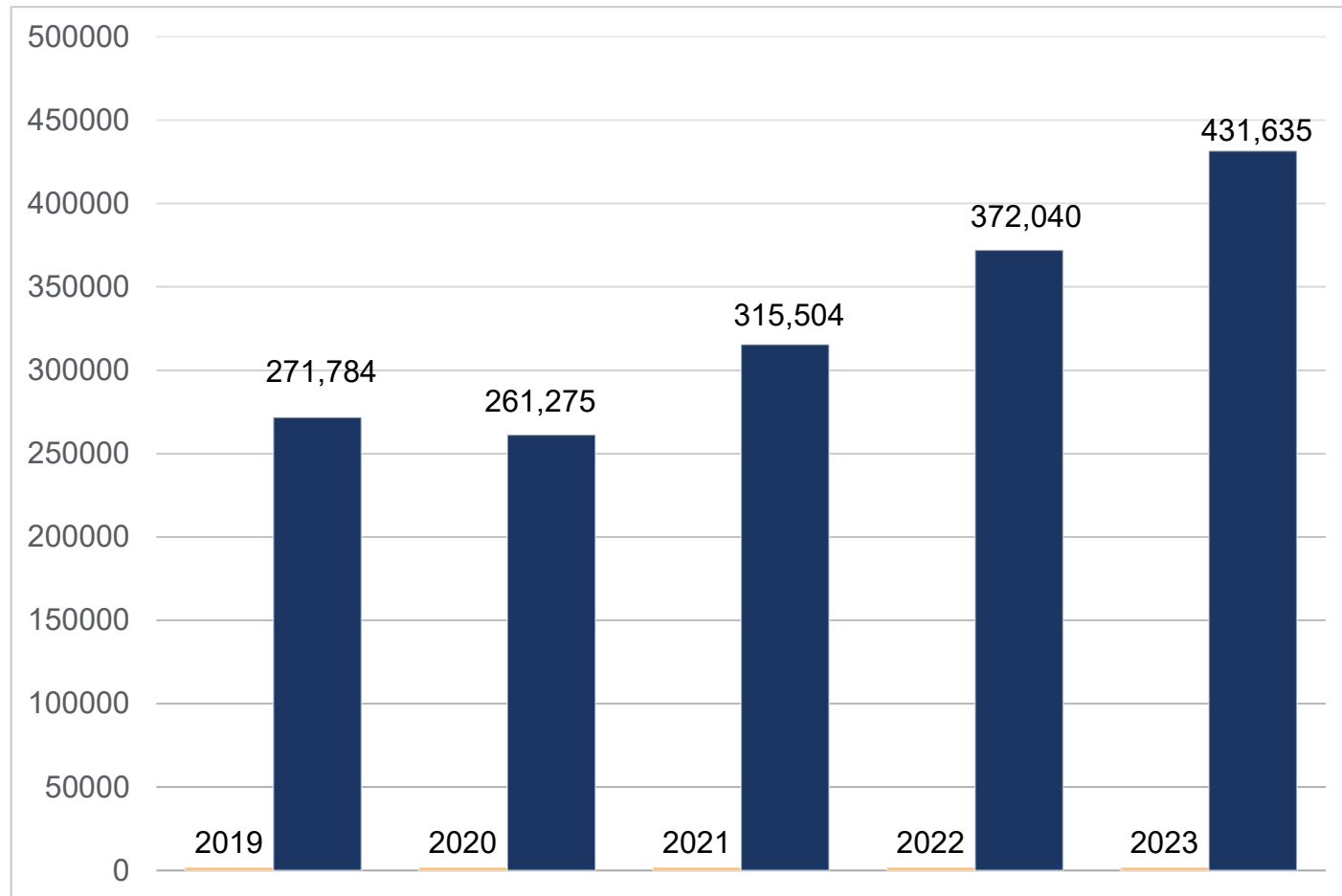
Number of Reporting Institutions 2015-2023



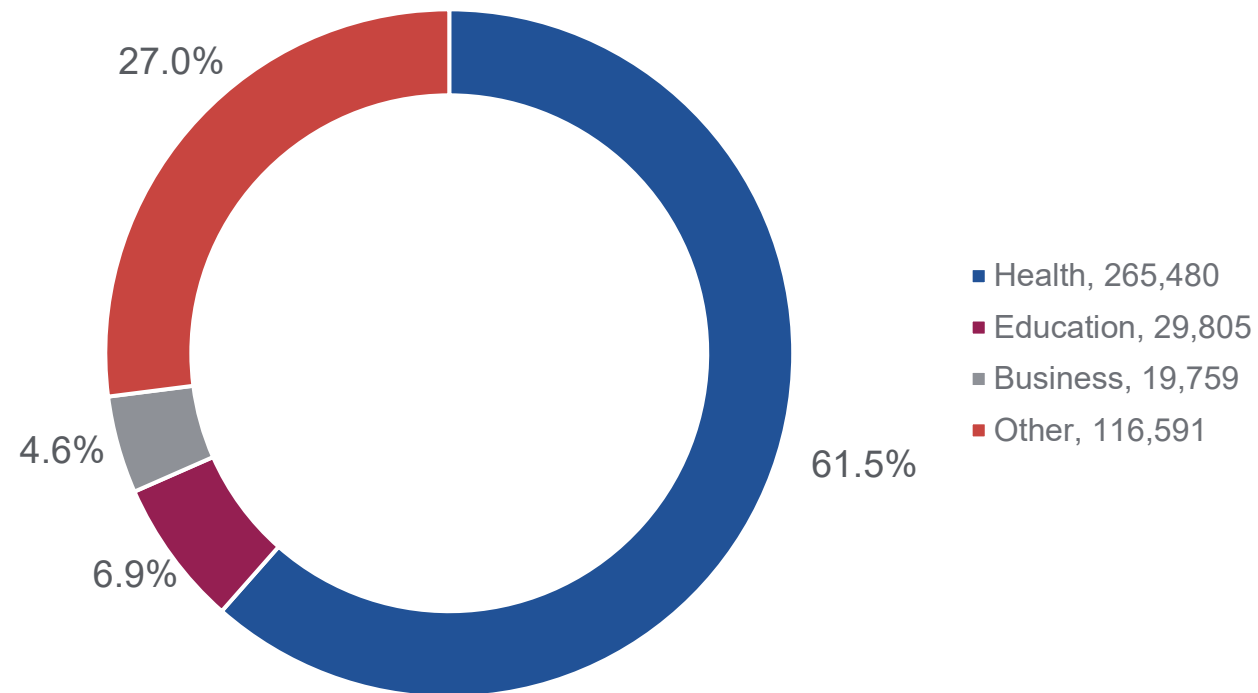
Exclusively Distance Education Enrollment



Total Reported Out-of-State Learning Placements 2019-2023

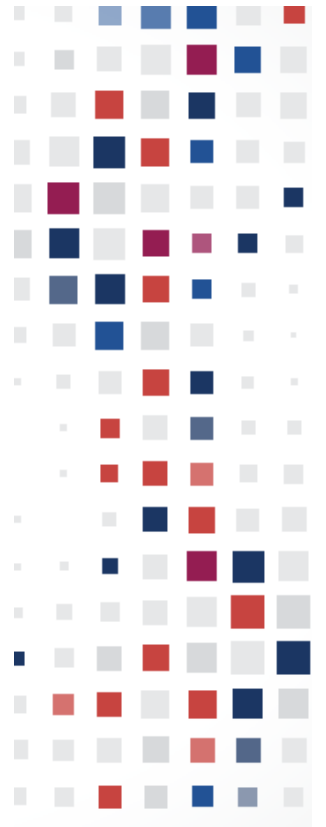


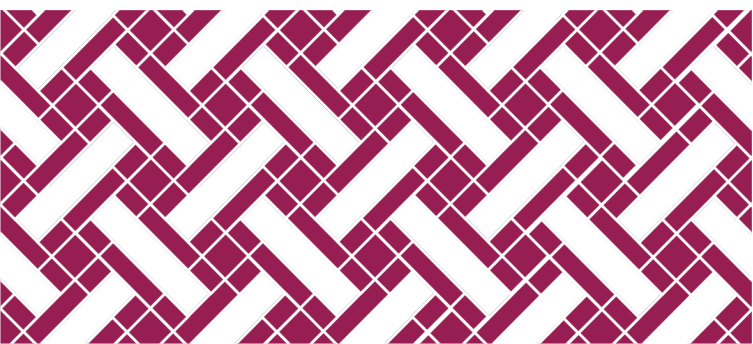
Total Reported Out-of-State Learning Placements by Program Area



Important Annual Data Reporting Dates

- **2023 Data Release:** October 3 2024
- **2024 Annual Data Handbook Available:** January 2025
- **2024 Annual Data Collection Webinar:** February / March 2025
- **2024 Annual Data Collection Window:** May 15 – June 15, 2025





Changes for 2025 Collection

Changes for 2025 Data Collection

Contact Verification

- Only users assigned as an institutional contact in Salesforce will be able to upload data.
- Users not in Salesforce will need to be verified by a current Salesforce contact for their institution (then entered by NC-SARA staff).
- Data reporting portal will be one public link, rather than individual institution links.
- Contacts for multiple institutions will be able to select the institution to submit for.



The screenshot shows a web form titled "Data Reporting Submission". At the top center is the NC SARA logo, which consists of a stylized square icon with red and blue elements, followed by the text "NC SARA" and "National Council for State Authorization Reciprocity Agreements" below it. Underneath the logo is the heading "Data Reporting". A red asterisk and the text "Please enter your email" are positioned above a text input field. The input field contains the placeholder text "you@example.com". At the bottom right of the form is a red button with the text "Next".

Changes for 2025 Data Collection

Data Reporting Submission

NC SARA
National Council for
State Authorization
Reciprocity Agreements

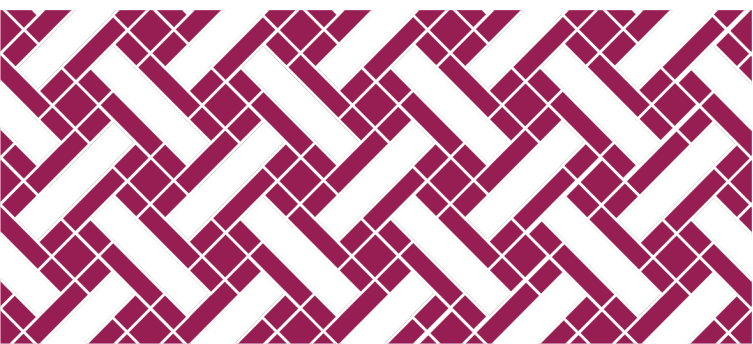
Data Reporting

Exclusively Distance Education Enrollment (EDEE) INCOMPLETE You have 2 Institutions with incomplete EDEE data Start EDEE	Out-of-State Learning Placement (OOSLP) INCOMPLETE You have 2 Institutions with incomplete OOSLP data Start OOSLP
---	--

[Exit](#)

File Upload vs. Manual Entry

- Users will be provided with two templates to compile their EDEE and OOSLP data.
- Data will be upload in a .csv file, rather than manually entered in the web form.
- Institutions will be given the chance to confirm data and resubmit a file in case of errors.
- Confirmation emails will include counts and submitter name.
- Users will easily see when they have a submission outstanding.



Other Data Resources

NC-SARA's Data Dashboards

Data Dashboards

NC-SARA is pleased to share new interactive data dashboards, below. These dashboards include all the data NC-SARA has been sharing publicly all along (and includes the most recent data collected from Fall 2022), but in an easier format for your access and use. Begin with the Instructions & Definitions tab, below, to learn how to use the dashboards and what the terminology means, and then feel free to move through the dashboards by using the tabs at the top. If you are seeking the previously shared downloadable data files, or if you need additional assistance with these dashboards or NC-SARA data in general, please contact: data@nc-sara.org.



NC-SARA Data Dashboards
Instructions & Definitions

SARA Institution Cost Savings

2023 Estimated Renewal Savings by Region:

State	Number of SARA Member Institutions	Estimated Costs	State and NC SARA Costs	SARA Affiliation Fee	Estimated Savings
MHEC	644	\$39,197,355	\$2,912,100		\$36,285,255
NEBHE	344	\$35,764,100	\$2,683,563	\$100,000	\$32,980,538
SREB	1,067	\$73,354,450	\$5,408,000	\$160,000	\$67,786,450
WICHE	275	\$18,217,525	\$1,328,000		\$16,889,525
Grand Total	2,330	\$166,533,430	\$12,331,663	\$260,000	\$153,941,768

SARA Cost Savings Calculator

The SARA Cost Savings calculator may be used by colleges and universities offering interstate distance education to:

- Estimate the costs associated with state authorization, both for SARA and non-SARA participants.
- Project changes to costs based on the addition of new distance education programs or expansion of existing programs.
- Evaluate the cost savings and the return on investment of SARA participation.

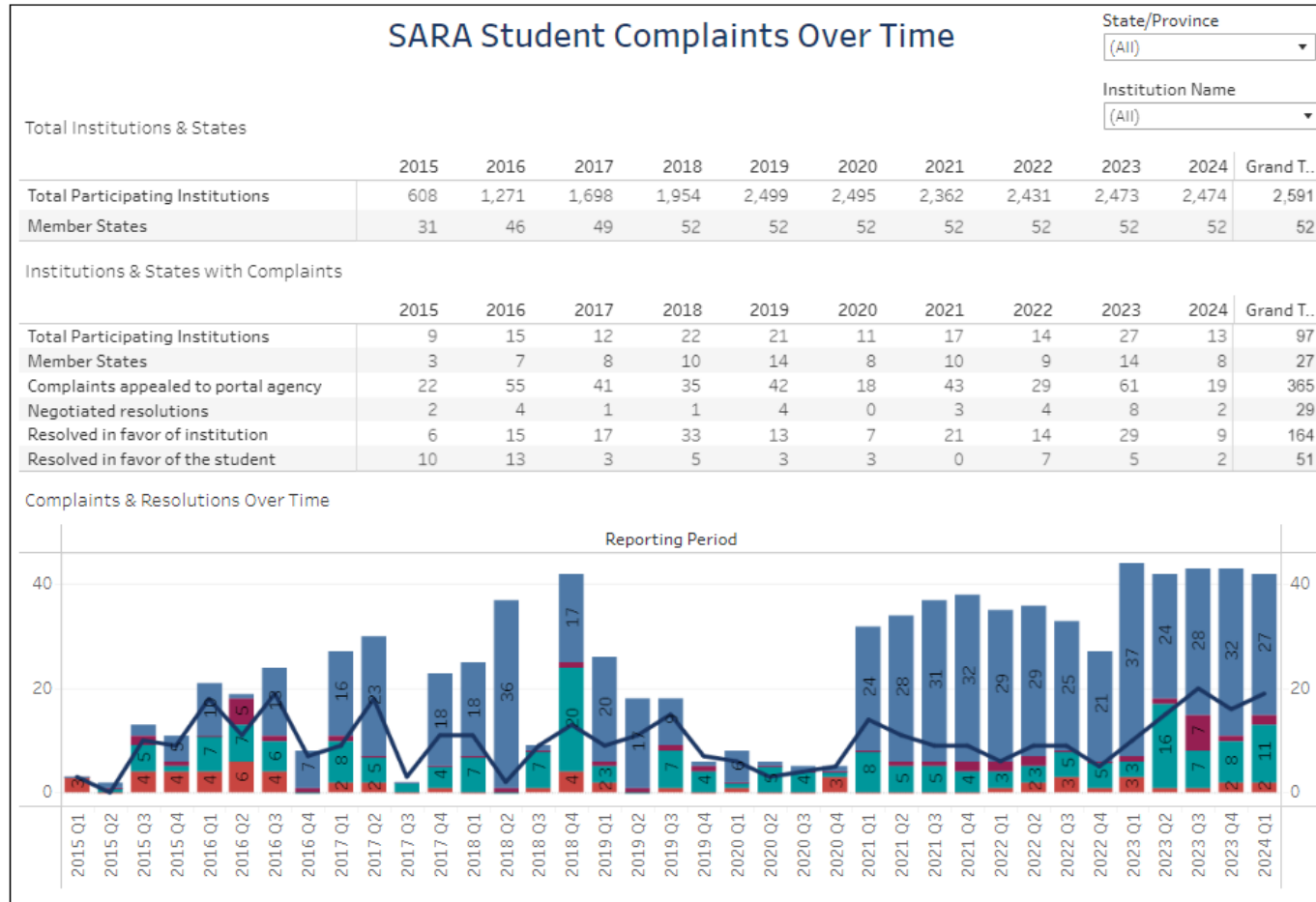
<https://nc-sara.org/sara-cost-savings-calculator>



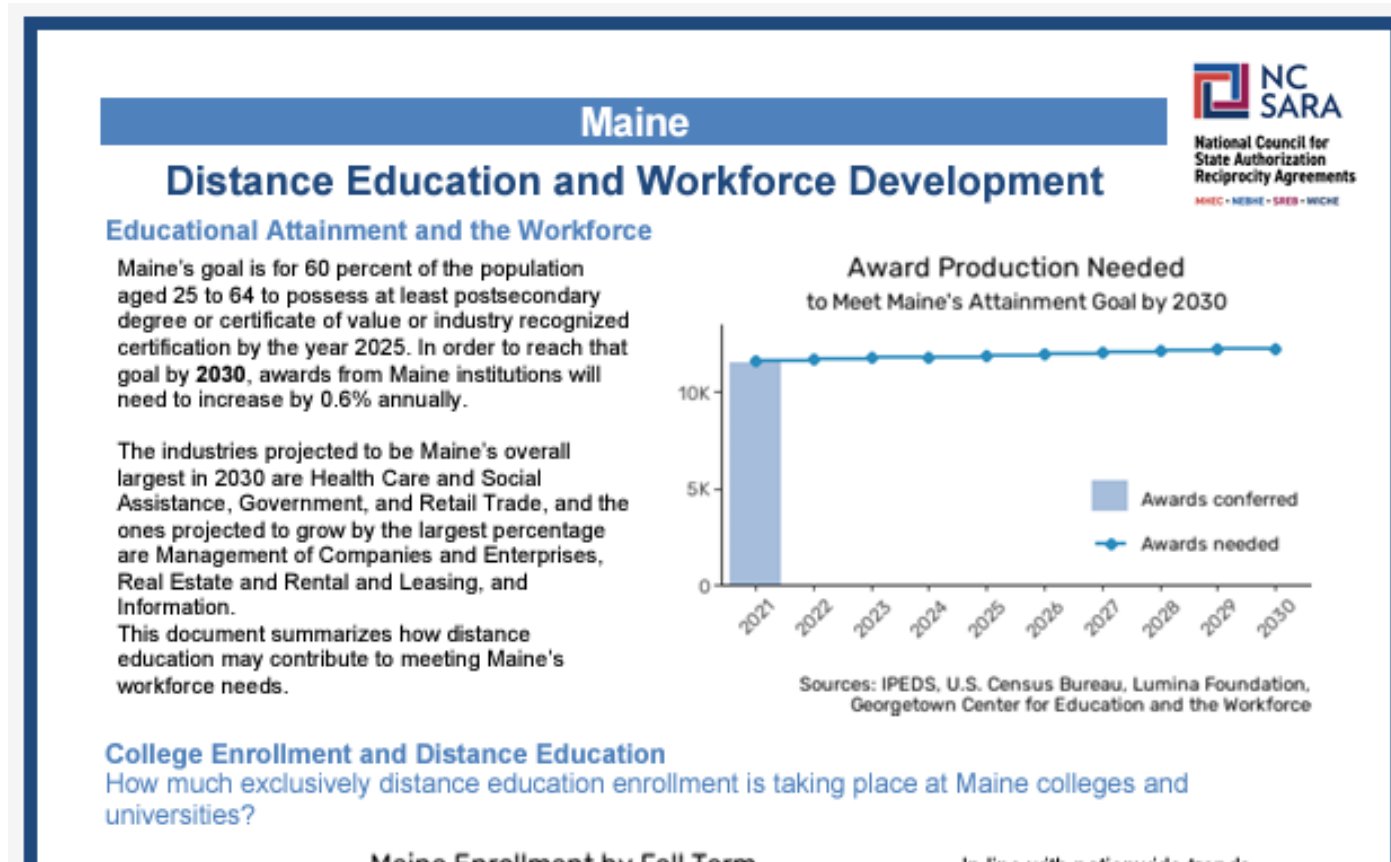
NC-SARA's Student Complaints Dashboards

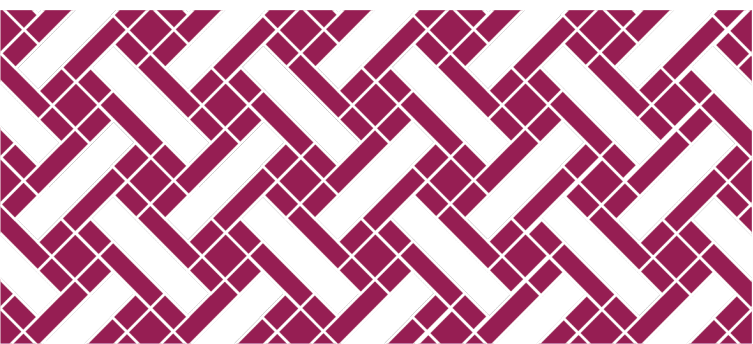
SARA Student Complaints Dashboard

[About SARA Complaints](#)
[Complaints Over Time](#)
[Complaints by State and Year](#)
[Complaints by Reporting Period and Institution](#)



Distance Education and Workforce Development Reports





SARA Source Updates

SARA Source

Currently:

- Student Audience
- Contains 1,400 programs from 60 institutions
- Data verified by NC-SARA staff
- Current program offerings
- Updated as data provided from institutions
- Site maintained by external contractor

New Version:

- SPE Audience
- Will contain programs with graduates from all SARA-participating institutions
- Publicly available data
- Offerings with graduates one year prior
- Updated annually (fall IPEDS release)
- Site maintained by NC-SARA staff



SARA Source

What major / area of study are you interested in?

Early childhood x

Type of Institution

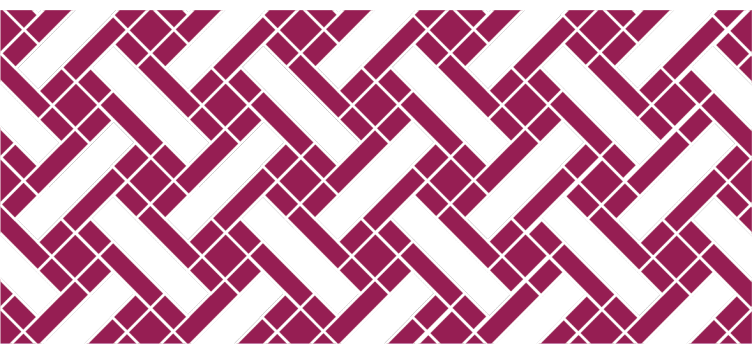
Public v

State/Province

(All) v

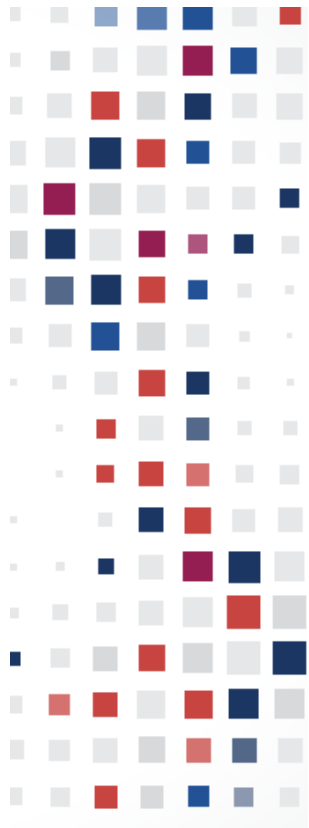
SARA-Participating Institutions with number of 100% Online Programs

Account Name	State/Province	Control of i..	CIPCODE - 2020 Classification		
Alabama A & M University	Alabama	Public	Early Childhood Education and Teaching	Certificates	0
				Associate's Degrees	0
				Bachelor's Degrees	0
				Postbaccalaureate Certificates	0
				Master's Degrees	1
				Post-master's Certificates	0
				Doctoral Degrees	0
Alabama State University	Alabama	Public	Early Childhood Education and Teaching	Certificates	0
				Associate's Degrees	0
				Bachelor's Degrees	0
				Postbaccalaureate Certificates	0
				Master's Degrees	1
				Post-master's Certificates	0
				Doctoral Degrees	0
Albany State University	Georgia	Public	Early Childhood Education and Teaching	Certificates	0
				Associate's Degrees	0
				Bachelor's Degrees	0
				Postbaccalaureate Certificates	0
				Master's Degrees	1
				Post-master's Certificates	0
				Doctoral Degrees	0
Amarillo College	Texas	Public	Early Childhood Education and Teaching	Certificates	0
				Associate's Degrees	1
				Bachelor's Degrees	0
				Postbaccalaureate Certificates	0
				Master's Degrees	0



Data Advisory Committee Work

Data Advisory Committee



Currently 13 members, including representatives from states, regional compacts, institutions, and external organizations

- Still looking for SREB SPE to join!

Upcoming areas of work:

- Changes to complaints data collection
- 2025 Institution Survey (data questions)
- Collecting additional data elements – demographics, outcomes, etc.

Questions and Discussion



Connect with NC-SARA

Subscribe to Our Newsletter

SUBSCRIBE



@NCSARA_News



<https://www.linkedin.com/company/nc-sara>

Thank You!



For questions please email:

Info@nc-sara.org

NC-SARA Website: www.nc-sara.org