



# Interactive SPE Annual Survey

**Rachel Christeson, Ph. D.,** Director, Research & Data Analysis , NC-SARA  
**Emily Jacobson,** Director, State Partnerships & Services, NC-SARA

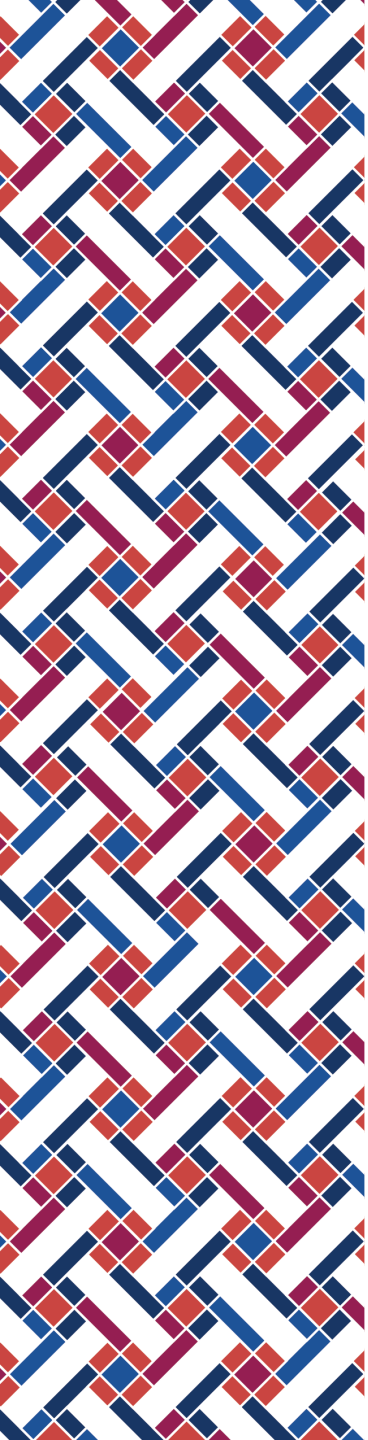
**NC-SARA SPE Annual Conference 2024**  
**September 11, 2024**





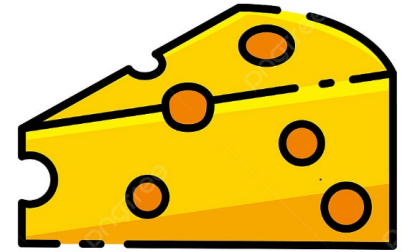
# OUR TIME TOGETHER

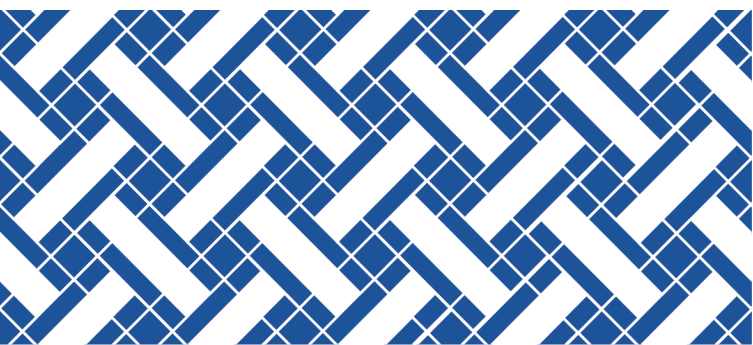
- \* Welcome, Intro, Overview of Survey Changes**
- \* 2024 SPE Annual Survey Data Snapshots**
- \* Small group discussion and report out**



**MAY BABIES ARE GREAT  
AND SO IS CHEESE**

**LEGENDS  
ARE BORN IN  
MAY**



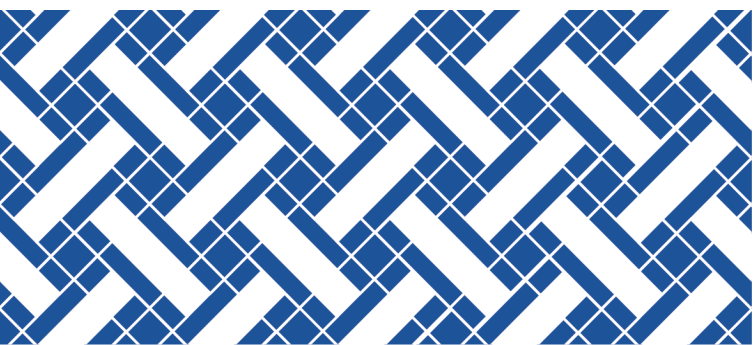


# OVERVIEW OF SURVEY CHANGES



# WHERE HAVE WE BEEN? WHERE ARE WE GOING? WHY?

- Questions asked historically
  - dedicated FTE, number of staff, years of service
- Questions new to 2024
  - Services and resources, SARA State & Territory grant, comms
- Rationale for Changes
- Where we hope to go



# **HIGHLIGHTS OF 2024 SPE SURVEY RESULTS**

**SARA SERVICES AND  
RESOURCES SPES ACCESS THE  
MOST**

The logo for the SARA Portal, featuring a stylized graphic of overlapping blue and red lines forming a grid-like pattern on the left, and the text "SARA Portal" in a bold, dark blue sans-serif font to the right.

**SARA Portal**

**Secure Documents for  
States**

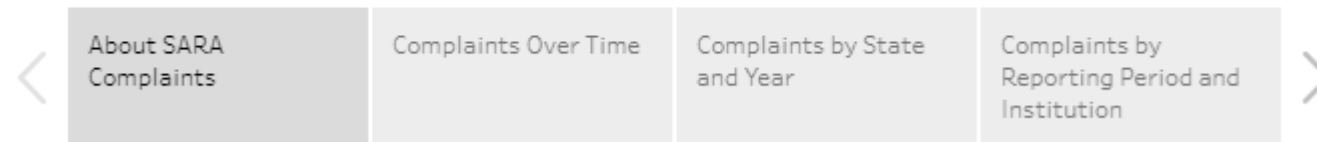
**Data Dashboards**

# SARA SERVICES AND RESOURCES SPES ACCESS THE LEAST

IT Office Hours



SARA Student Complaints Dashboard





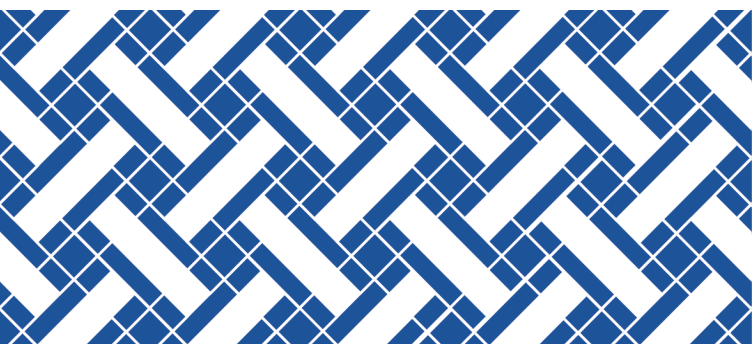
# SARA QUICK START GUIDES AND/OR TRAINING MODULES SPES USE THE MOST

1. Annual Data Reporting
2. California Students
3. Field Trips
4. Institution Applications
5. Military Bases
6. Overseas Students
7. Professional Licensure
8. SARA Fees
9. SARA Late Fees
10. Short Courses
11. Student Complaints
12. Third Party Contracts



## OTHER ACTIVITIES

- 73% represent their SPE on the Regional Steering Committee
- 25% of SPEs participated in an onboarding activity
- 33% participate in a committee or working group, spending on average 1-3 hours a month
- Nearly everyone was involved in the PMP in some way – 93% attended regional meetings where you discussed or voted on proposals



# **GROUP DISCUSSION AND LIVE FEEDBACK**



# QUESTIONS FOR DISCUSSION

1. What are your favorite existing NC-SARA services/resources?
2. How can NC-SARA improve current services and resources?
3. What new services or resources would you like NC-SARA to consider offering in the future?
4. Are there any resources or services you think are unnecessary? What do we stop doing?

20:00



# QUESTION #1

What are your favorite existing NC-SARA services/resources?



## QUESTION #2

How can NC-SARA improve current services and resources?



## QUESTION #3

What new services or resources would you like NC-SARA to consider offering in the future?



## QUESTION #4

Are there any resources or services you think are unnecessary? What do we stop doing?



# OTHER THOUGHTS

Do you have any other questions or thought for NC-SARA?

We have a question for you about 2026 SPE Annual Conference planning...

# Thank You!



For questions please email:

[Info@nc-sara.org](mailto:Info@nc-sara.org)

NC-SARA Website: [www.nc-sara.org](http://www.nc-sara.org)